

NATURE RESERVE

Gazetted Name: Cape Peninsula Nature Reserve

Action as Gazetted	Gazette	Notice no. & year	Page No.	Extent (morgen/ha)
Establishment of reserve	9056	Notice 171 of 10 February 1984	18-33	
Alteration of boundaries	4592	Notice 52 of 30 June 1989	2227	

DEPARTEMENT VAN STAATKUNDIGE ONTWIKKELING EN BEPLANNING

No. 171 **10 Februarie 1984**

REGSTELLINGSKENNISGEWING. — VOORBEHOUD VAN GEBIEDE IN DIE KAAPSE SKIEREILAND AS, ONDERSKEIDELIK, NATUURGEBIEDE EN GEBIEDE VIR DIE ONTGINNING VAN KAOLIEN

As gevolg van sekere weglatings in Bylae A van Goewermentskennisgewing 2199 van 7 Oktober 1983, trek ek, Jan Christiaan Heunis, Minister van Staatkundige Ontwikkeling en Beplanning, kragtens die bevoegdheid my verleen by artikel 10 van die Wet op Fisiese Beplanning, 1967 (Wet 88 van 1967), gemelde kennisgewing hierby in en bepaal ek kragtens die bevoegdheid my verleen by artikel 4 (1) van gemelde Wet hierby dat die grond omskryf in Bylae A van hierdie kennisgewing as 'n natuurgebied soos omskryf in artikel 1 van voormelde Wet voorbehou word en dat die grond omskryf in Bylae B van hierdie kennisgewing vanaf gemelde datum vir die ontginning van kaolien voorbehou word.

Geteken te Kaapstad op hede die 20ste dag van Januarie 1984.

J. C. HEUNIS, Minister van Staatkundige Ontwikkeling en Beplanning.

DEPARTMENT OF CONSTITUTIONAL DEVELOPMENT AND PLANNING

No. 171 **10 February 1984**

NOTICE OF RECTIFICATION.—RESERVATION OF AREAS IN THE CAPE PENINSULA AS NATURE AREAS AND AREAS FOR THE MINING OF KAOLIN, RESPECTIVELY

Due to certain omissions in Schedule A of Government Notice 2199 of 7 October 1983, I, Jan Christiaan Heunis, Minister of Constitutional Development and Planning, under and by virtue of the powers vested in me by section 10 of the Physical Planning Act, 1967 (Act 88 of 1967), hereby withdraw the said notice and under and by virtue of the powers vested in me by section 4 (1) of the said Act, declare that the land defined in Schedule A of this notice, shall, as from the date of publication of this notice, be reserved as a nature area as defined in section 1 of the above-mentioned Act and that the land defined in Schedule B of this notice shall, as from the said date be reserved for the exploitation of kaolin.

Signed at Cape Town this 20th day of January 1984.

J. C. HEUNIS, Minister of Constitutional Development and Planning.

BYLAE A**KAAPSE SKIEREILANDNATUURGEBIED****1. Noordelike Gebied**

Begin by die oostelike baken van Gedeelte 7 (die dorp Oudekraal, Algemene Plan TP 1781) van die plaas Oude Kraal 902, administratiewe distrik van die Kaap; daarvan noordweswaarts en noordooswaarts met die suidwestelike en noordwestelike grense langs van Erf 1559 (Dorpsgrond), Kampsbaai (getoon op Algemene Plan TP 1694, Vel 2, van Kampsbaai-uitbreiding 1), sodat dit by hierdie gebied ingesluit word, tot by sy noordoostelike Baken (A); daarvan noordwaarts en met die grense van die volgende eiendomme langs sodat hulle van hierdie gebied uitgesluit word: Erf 2255, Kampsbaai [die dorp Brighton Estate-uitbreiding 6, Algemene Plan TP 587 SD (4012) en TP 653 SD (4084)], Erf 22, genoemde Erf 2255, Erf 24 [die dorp Brighton Estate 3, Algemene Plan TP 78 en TP 477 SD (3904)], Erf 2244, die dorp Brighton Estate-uitbreiding 5, Algemene Plan TP 586 SD (4011), genoemde Erf 24 en Erf 352 tot by die westelike punt van laasgenoemde erf; daarvan noordweswaarts met die grense van Erf 11 langs, sodat dit by hierdie gebied ingesluit word, tot by die suidelike baken van Erf 148, Clifton (geliasseer as Plan 146); daarvan noordweswaarts met die grense van genoemde Erf 148 langs tot by die noordelike baken van Erf 144; daarvan suidooswaarts en met die grense van die volgende eiendomme langs sodat hulle van hierdie gebied uitgesluit word: Genoemde Erf 144 en Erf 150 (die dorp Sea View Estate), Algemene Plan TP 11° (4685) tot by die punt waar die noordwestelike grens van laasgenoemde erf die noordwestelike grens van Erf 4, Kampsbaai, kruis; daarvan suidweswaarts met die noordwestelike grens van genoemde Erf 4 langs tot by die noordelike baken van Erf 632; daarvan suidweswaarts en met die grense van genoemde Erf 632 langs, sodat dit van hierdie gebied uitgesluit word, tot by die suidelike baken daarvan; daarvan suidweswaarts met die grenslyn gemerk 1-m op die diagram van Erf 4 langs tot by die kruising met die noordoostelike grens van die Clifton-natuurreserwe, bewaar ingevolge Goewermentskennisgewing 2269 van 28 Oktober 1949; daarvan noordweswaarts met laasgenoemde grens langs, soos beskryf in Diagram 11377/1948 (geliasseer na Erf 148, Clifton) tot by sy kruising met die noordwestelike grens van genoemde Erf 4, Kampsbaai; daarvan noordooswaarts met laasgenoemde grens langs tot by die punt waar dit gekruis word deur die oostelike grens van Victoriaweg; daarvan noordweswaarts en noordooswaarts met genoemde oostelike grens van Victoriaweg langs tot by die punt waar die verlenging, in 'n noordwestelike rigting, van die noordoostelike grens van Erf 141, Clifton, genoemde oostelike grens van Victoriaweg kruis; daarvan suidooswaarts met genoemde verlenging en noordoostelike grens van genoemde Erf 141 langs tot by Baken i op die diagram daarvan; daarvan noordwaarts in 'n reguit lyn tot by die suidelike baken van Erf 140; daarvan noordooswaarts met die grense langs van genoemde Erf 140, Erf 130 en Erf 180, sodat hulle van hierdie gebied uitgesluit word, tot by die oostelike baken van laasgenoemde erf; daarvan noordooswaarts en met die grense van Erf 260 langs, sodat dit by hierdie gebied ingesluit word, tot by die noordoostelike baken daarvan; daarvan noordooswaarts oor Mount Pleasant Steps, 3,78 m wyd, en met die suidoostelike grense langs van Erwe 119 en 145 tot by die suidwestelike baken van Erf 131; daarvan suidooswaarts en met die grense langs van genoemde Erf 131 en Erf 133 (die dorp Clifton-uitbreiding 1, Algemene Plan TP 900), sodat hulle van hierdie gebied uitgesluit word, tot by die noordelike baken van laasgenoemde erf; daarvan noordweswaarts in 'n reguit lyn tot by die westelike baken van Erf 28, Bantry Bay; daarvan

SCHEDULE A**CAPE PENINSULA NATURE AREA****1. Northern Area**

Beginning at the easternmost beacon of Portion 7 (Oudekraal Township, General Plan TP 1781) of the farm Oude Kraal 902, Administrative District of the Cape; thence north-westwards and north-eastwards along the south-western and north-western boundaries of Erf 1559 (Commonage), Camps Bay, as shown on General Plan TP 1694, Sheet 2, of Camps Bay Extension 1, so as to include it in this area, to its north-eastern Beacon (A); thence north-eastwards and along the boundaries of the following properties, so as to exclude them from this area: Erf 2255, Camps Bay [Brighton Estate Township Extension 6, General Plan TP 587 SD (4012) and TP 653 SD (4084)], Erf 22, the said Erf 2255, Erf 24 [Brighton Estate Township 3, General Plan TP 78 and TP 477 SD (3904)], Erf 2244, Brighton Estate Township Extension 5, General Plan TP 586 SD (4011), the said Erf 24 and Erf 352 to the westernmost point of the last-mentioned erf; thence north-westwards along the boundaries of Erf 11, so as to include it in this area, to the southernmost beacon of Erf 148, Clifton (filed as Plan 146); thence north-westwards along the boundaries of the said Erf 148 to the northernmost beacon of Erf 144; thence south-eastwards and along the boundaries of the following properties so as to exclude them from this area: The said Erf 144 and Erf 150 (Sea View Estate Township) General Plan TP 11° (4685) to the point where the north-western boundary of the latter erf intersects the north-western boundary of Erf 4, Camps Bay; thence south-westwards along the north-western boundary of the said Erf 4 to the northernmost beacon of Erf 632; thence south-westwards and along the boundaries of the said Erf 632, so as to exclude it from this area, to the southernmost beacon thereof; thence south-westwards along the boundary lettered 1-m on the diagram of Erf 4 to the point of intersection with the north-eastern boundary of Clifton Scenic Reserve, reserved in terms of Government Notice 2269, dated 28 October 1949; thence north-westwards along the last-mentioned boundary, as defined by Diagram 11377/1948 (filed after Erf 148, Clifton) to its intersection with the north-western boundary of the said Erf 4, Camps Bay; thence north-eastwards along the last-mentioned boundary to the point where it is intersected by the eastern boundary of Victoria Road; thence north-westwards and north-eastwards along the said eastern boundary of Victoria Road to the point where the prolongation, in a north-western direction, of the north-eastern boundary of Erf 141, Clifton, intersects the said eastern boundary of Victoria Road; thence south-eastwards along the said prolongation and north-eastern boundary of the said Erf 141 to Beacon i on the diagram thereof; thence northwards in a straight line to the southernmost beacon of Erf 140; thence north-eastwards along the boundaries of the said Erf 140, Erf 130 and Erf 180, so as to exclude them from this area, to the easternmost beacon of the last-mentioned erf; thence north-eastwards and along the boundaries of Erf 260, so as to include it in this area, to its north-eastern beacon; thence north-eastwards across Mount Pleasant Steps, 3,78 m wide, and along the south-eastern boundaries of Erven 119 and 145 to the south-western beacon of Erf 131; thence south-eastwards and along the boundaries of the said Erf 131 and Erf 133 (Clifton Township Extension 1, General Plan TP 900), so as to exclude them from this area, to the northernmost beacon of the latter erf; thence north-westwards in a straight line to the westernmost beacon of Erf 28 Bantry Bay; thence south-eastwards along the boundaries of the following erven, so as to exclude them from this area: The said Erf 28 and Erven 29, 461, 2 and 1 [Bantry Bay Township, General Plan TP 5 m (4638)] to the beacon lettered j on the diagram of the last-mentioned erf (which is also the easternmost beacon of Erf

suidooswaarts met die grense van die volgende erwe langs sodat hulle van hierdie gebied uitgesluit word: Genoemde Erf 28 en Erwe 29, 461, 2 en 1 [die dorp Bantry Bay, Algemene Plan TP 5 m (4638)] tot by die Baken j op die diagram van laasgenoemde erf (wat terselfdertyd die oostelike baken van Erf 571, Bantry Bay, is); daarvandaan noordooswaarts in 'n reguit lyn oor die openbare deurgang tot by Baken B² op die diagram van Erf 1483, Fresnaye; daarvandaan verder noordooswaarts in 'n reeks reguit lyne deur Bakens A², S¹, N¹, M¹ en B¹ op genoemde diagram van laasgenoemde erf, en deur Bakens E en D tot C op die diagram van Erf 1465; daarvandaan noordooswaarts met die grense van die volgende eiendomme langs sodat hulle van hierdie gebied uitgesluit word: Genoemde Erf 1465, Fresnaye, Erf 1215, die dorp Fresnaye 2 (Algemene Plan TP 1016) oor Avenue Fresnaye, 15,74 m wyd, Erwe 1135 en 1137, oor Avenue des Huguenots, 9,45 m wyd, Erwe 1095 en 1094 oor Avenue Disandt, 15,75 m wyd, Erwe 1076 en 1075 oor Avenue de Berrange, 9,45 m wyd, Erwe 1037, 1016 en 1015 oor Avenue Drelincourt, 9,45 m wyd, Erwe 985, 982 en 1025 oor Avenue Fontainbleau, 9,45 m wyd, Erwe 955 en 1373, oor Avenue Bordeaux, 9,45 m wyd, en Erf 932 (Onderverdeelde Landgoed van Monastery, Algemene Plan TP 101) tot by die noordoostelike baken van laasgenoemde erf; daarvandaan noordooswaarts oor St Johns-weg, 15,75 m wyd, en noordweswaarts met sy noordoostelike grens langs tot by die suidelikste baken van Erf 1025, Seepunt-Oos; daarvandaan noordooswaarts met die grense van die volgende eiendomme langs sodat hulle van hierdie gebied uitgesluit word: Genoemde Erf 1025, Erwe 1434 en 1123 oor Barkleyweg 9,45, m wyd, Erwe 1144, 1194, 1430, 838, 583, 566 en 1529, Seepunt-Oos, tot by die noordelike baken van laasgenoemde erf; daarvandaan noordooswaarts in 'n reeks reguit lyne deur koördinaatpunte 1, 2 en 3 tot by punt 4¹; daarvandaan suidooswaarts en met die grense van die volgende eiendomme langs sodat hulle van hierdie gebied uitgesluit word: Erwe 202 en 217 Seepunt-Oos [Sea View Park Landgoed, Algemene Plan S 96 (2064)] tot by die oostelike baken van laasgenoemde erf; daarvandaan suidooswaarts in 'n reguit lyn tot by die suidelikste baken van Erf 1429, Groenpunt; daarvandaan noordooswaarts met die grense van die volgende eiendomme langs sodat hulle van hierdie gebied uitgesluit word: Genoemde Erf 1429 en Erwe 1432, 1428, 64, 66, 68, 94, 96, 155, 156, 157, 158, 159, 160, 161, 162, 163, 164, 165, 166, 167, 168, 1377, 1374, 240 [die dorp Airedale, Algemene Plan TP 28 c (4454)], 241, 245, 246 [die dorp Glenside, Algemene Plan TP 12 n (4664)], 249 [die dorp Attwell, Algemene Plan TP 28 b (4424)], 251 [die dorp Upwood, Algemene Plan TP 22 a (4388)], 1548, 296, 298, 299, 300, 301, 302, 257 (deurgang 3,15 m wyd), 303, 257 (Carregsingel), en 282, 278 en 277 Groenpunt, tot by die punt waar die suidoostelike grens van laasgenoemde erf gekruis word deur die verlenging, in 'n noordwestelike rigting, van die noordoostelike grens van Erf 370, Kaapstad; daarvandaan suidooswaarts met genoemde verlenging langs tot by die noordelike baken van genoemde Erf 370, Kaapstad; daarvandaan suidooswaarts en met die grense van genoemde Erf 370 langs, sodat dit by hierdie gebied ingesluit word, tot by die punt waar die verlenging van die suidoostelike grens van genoemde Erf 370 die noordoostelike grens van Erf 372, Kaapstad, kruis; daarvandaan suidooswaarts en met die grense van genoemde Erf 372 langs, sodat dit by hierdie gebied ingesluit word, tot by die noordwestelike baken van Erf 1801, Kaapstad; daarvandaan algemeen suidwaarts met die westelike grens van genoemde Erf 1801, Kaapstad, langs, sodat dit by hierdie gebied uitgesluit word, tot by die suidwestelike baken daarvan; daarvandaan suidweswaarts met die suidoostelike grens van Erf 985, Kaapstad, en die verlenging daarvan langs tot by die punt waar dit die noordoostelike grens ef van Erf 1796,

571, Bantry Bay); thence north-eastwards in a straight line, across the public thoroughfare, to beacon lettered B² on the diagram of Erf 1483, Fresnaye; thence further north-eastwards in a series of straight lines through Beacons A², S¹, N¹, M¹, and B¹ on the said diagram of the last-mentioned erf, and through Beacons E and D to C on the diagram of Erf 1465; thence north-eastwards along the boundaries of the following properties, so as to exclude them from this area: The said Erf 1465, Fresnaye, Erf 1215, Fresnaye Township 2 (General Plan TP 1016) across Avenue Fresnaye 15,74 m wide, Erven 1135 and 1137, across Avenue des Huguenots, 9,45 m wide, Erven 1095 and 1094, across Avenue Disandt, 15,74 m wide, Erven 1076 and 1075, across Avenue de Berrange, 9,45 m wide, Erven 1037, 1016 and 1015, across Avenue Drelincourt, 9,45 m wide, Erven 985, 982 and 1025, across Avenue Fontainbleau, 9,45 m wide, Erven 955 and 1373, across Avenue Bordeaux, 9,45 m wide, and Erf 932 (subdivided Estate of Monastery, General Plan TP 101) to the north-eastern beacon of the last-mentioned erf; thence north-eastwards across St Johns Road, 15,74 m wide, and north-westwards along its north-eastern boundary to the southernmost beacon of Erf 1025, Sea Point East; thence north-eastwards along the boundaries of the following properties, so as to exclude them from this area: The said Erf 1025 and Erven 1434 and 1123, across Barkley Road, 9,45 m wide, Erven 1144, 1194, 1430, 838, 583, 566 and 1529, Sea Point East, to the northernmost beacon of the last-mentioned erf; thence north-eastwards in a series of straight lines through co-ordinated points 1, 2 and 3 to point 4¹; thence south-eastwards and along the boundaries of the following properties, so as to exclude them from this area: Erven 202 and 217, Sea Point East [Sea View Park Estate, General Plan S96 (2064)] to the easternmost beacon of the latter erf; thence south-eastwards in a straight line to the southernmost beacon of Erf 1429, Green Point; thence north-eastwards along the boundaries of the following properties, so as to exclude them from this area: The said Erf 1429 and Erven 1432, 1428, 64, 66, 68, 94, 96, 155, 156, 157, 158, 159, 160, 161, 162, 163, 164, 165, 166, 167, 168, 1377, 1374, 240 [Airedale Township, General Plan TP 28 c (4454)], 241, 245, 246 [Glenside Township, General Plan TP 12 n (4664)], 249 [Attwell Township, General Plan TP 28 b (4424)], 251 [Upwood Township, General Plan TP 22 a (4388)], 1548, 296, 298, 299, 300, 301, 302, 257 (passage 3,15 m wide), 303, 257 (Carreg Crescent), and 282, 278 and 277, Green Point, to the point where the south-eastern boundary of the last-mentioned erf is intersected by the prolongation in a north-western direction, of the north-eastern boundary of Erf 370, Cape Town; thence south-eastwards along the said prolongation to the northernmost beacon of the said Erf 370, Cape Town; thence south-eastwards and along the boundaries of the said Erf 370, so as to include it in this area, to the point where the prolongation of the south-eastern boundary of the said Erf 370 intersects the north-eastern boundary of Erf 372, Cape Town; thence south-eastwards and along the boundaries of the said Erf 372, so as to include it in this area, to the north-western beacon of Erf 1801, Cape Town; thence generally southwards along the western boundary of the said Erf 1801, Cape Town, so as to exclude it from this area, to the south-western beacon thereof; thence south-westwards along the south-eastern boundary of Erf 985, Cape Town, and its prolongation, to the point where it intersects the north eastern Boundary ef of Erf 1796. Cape Town; thence north-westwards to a point on the said Boundary ef on the diagram of

Kaapstad, kruis; daarvandaan noordweswaarts tot by 'n punt op genoemde grens ef op die diagram van Erf 1796, Kaapstad, wat 248,74 m noordwes van Baken f is; daarvandaan suidweswaarts in 'n reguit lyn tot by 'n punt op grens kl op laasgenoemde diagram, 16,76 m van Baken k af; daarvandaan suidooswaarts met laasgenoemde grens langs tot by die westelikste baken van Erf 9461, Kaapstad; daarvandaan suidooswaarts met die grense van genoemde Erf 9461 en Erf 9688, Kaapstad, langs, sodat hulle van hierdie gebied uitgesluit word, tot by Baken S op die diagram van laasgenoemde erf; daarvandaan noordweswaarts en met die grense van Erwe 81 en 87, Tamboerskloof, langs, sodat hulle van hierdie gebied uitgesluit word, tot by die noordelikste baken van laasgenoemde erf; daarvandaan noordweswaarts in 'n reguit lyn tot by die oostelikste baken van Erf 89, Tamboerskloof; daarvandaan noordweswaarts en met die grense van die volgende eiendomme langs sodat hulle van hierdie gebied uitgesluit word: Genoemde Erf 89 en Erwe 90, 91, 92, 88, 95, genoemde 88 en Erwe 1192, 996, 1081, 102, 100, 101 en 1101, Tamboerskloof, tot by die westelikste baken van laasgenoemde erf; daarvandaan noordweswaarts met die noordoostelike grens van Erf 1084, Tamboerskloof, langs tot by Baken C op die diagram van Erf 1137, Tamboerskloof; daarvandaan algemeen suidwaarts met die grense langs van Erwe 1137, 1140, 1171, 1172, 1173, 1174 en 1175, Tamboerskloof, sodat hulle by hierdie gebied ingesluit word, tot by Baken F op die diagram van laasgenoemde erf; daarvandaan suidooswaarts met die suidwestelike grens van Erf 1249, Tamboerskloof, langs tot by die suidwestelike Baken (N) daarvan; daarvandaan suidooswaarts in 'n reguit lyn tot by die noordwestelike baken van Erf 1122, Tamboerskloof; daarvandaan suidooswaarts met die grense langs van genoemde Erf 1122 en Erwe 1121 en 1120, Tamboerskloof, sodat hulle van hierdie gebied uitgesluit word, tot by die suidwestelike baken van laasgenoemde erf; daarvandaan suidooswaarts met die verlenging, in 'n suidoostelike rigting, van die suidwestelike grens van genoemde Erf 1120, Tamboerskloof, langs tot by die punt waar dit gekruis word deur die noordwestelike grens van Erf 957, Tamboerskloof; daarvandaan noordooswaarts met die grense langs van genoemde Erf 957 en Erf 956 en genoemde 957, Tamboerskloof, sodat hulle by hierdie gebied ingesluit word, tot by Baken J op die diagram van laasgenoemde erf; daarvandaan suidwaarts in 'n reguit lyn tot by die westelikste Baken (A) van Erf 1998, Oranjezicht; daarvandaan algemeen ooswaarts met die grense van die volgende erwe langs sodat hulle van hierdie gebied uitgesluit word: Genoemde Erf 1998 en Erwe 1991, 2854, 2853, 2452 (Openbare Ruimte), 2770, 2444, 2443, 2442, 2949, 2440, 2439, 2438, 2437, 2436, 2435, 2434, 2631, 2632, 2633, 2635, 2519 (Oranjezicht Township Extension 4, General Plan TP 1722), 2273 [Oranjezicht Township Extension 3, TP 462 SD (3890)] en Erf 1088 Oranjezicht, tot by Baken d op die diagram van laasgenoemde erf; daarvandaan suidooswaarts in 'n reguit lyn tot by die westelikste baken van Erf 941, Oranjezicht; daarvandaan suidooswaarts met die grense van die volgende eiendomme langs sodat hulle van hierdie gebied uitgesluit word: Genoemde Erf 941 en Erwe 2010 (die dorp Oranjezicht A-uitbreiding 1, Algemene Plan TP 308), 867 [die dorp Oranjezicht A, Algemene Plan TP 8 n (4661)], 2213 [die dorp Oranjezicht A-uitbreiding 2, Algemene Plan TP 206 SD (3364)], genoemde Erf 867 en Erf 2517, Oranjezicht, tot by die suidoostelike baken van Erf 2793, Oranjezicht; daarvandaan ooswaarts in 'n reguit lyn wat laasgenoemde baken verbind met die suidwestelike baken van Erf 1704, Vredehoek, tot by 'n punt waar genoemde reguit lyn die westelike grens van Erf 1160, Vredehoek, kruis; daarvandaan suidooswaarts met die westelike grens van laasgenoemde erf langs tot by die suidelike baken daarvan; daarvandaan noordooswaarts in 'n reguit lyn oor Deer Parkrylaan tot by die suidelike baken

Erf 1796, Cape Town, which is 248,74 m northwest of Beacon f; thence south-westwards in a straight line to a point on Boundary kl on the last-mentioned diagram, 16,76 m from Beacon k; thence south-eastwards along the last-mentioned boundary to the westernmost beacon of Erf 9461, Cape Town; thence south-eastwards along the boundaries of the said Er 9461 and Erf 9688, Cape Town, so as to exclude them from this area, to Beacon S on the diagram of the latter erf; thence north-westwards and along the boundaries of Erven 81 and 87, Tamboerskloof, so as to exclude them from this area, to the northernmost beacon of the latter erf; thence north-westwards in a straight line to the easternmost beacon of Erf 89, Tamboerskloof; thence north-westwards and along the boundaries of the following properties, so as to exclude them from this area: The said Erf 89 and Erven 90, 91, 92, 88 and 95 and the said Erf 88 and Erven 1192, 996, 1081, 102, 100, 101 and 1101, Tamboerskloof, to the westernmost beacon of the last-mentioned erf; thence north-westwards along the north-eastern boundary of Erf 1084, Tamboerskloof to Beacon C on the diagram of Erf 1137, Tamboerskloof; thence generally southwards along the boundaries of Erven 1137, 1140, 1171, 1172, 1173, 1174 and 1175, Tamboerskloof, so as to include them in this area, to Beacon F on the diagram of the last-mentioned erf; thence south-eastwards along the south-western boundary of Erf 1249, Tamboerskloof, to the south-western Beacon (N) thereof; thence south-eastwards in a straight line to the north-western beacon of Erf 1122, Tamboerskloof; thence south-eastwards along the boundaries of the said Erf 1122 and Erven 1121 and 1120, Tamboerskloof, so as to exclude them from this area, to the south-western beacon of the last-mentioned erf; thence south-eastwards along the prolongation, in a south-eastern direction, of the south-western boundary of the said Erf 1120, Tamboerskloof, to the point where it is intersected by the north-western boundary of Erf 957, Tamboerskloof; thence north-eastwards along the boundaries of the said Erf 957 and Erf 956 and the said Erf 957, Tamboerskloof, so as to include them in this area, to Beacon J on the diagram of the latter erf; thence southwards, in a straight line, to the westernmost Beacon (A) of Erf 1998, Oranjezicht; thence generally eastwards along the boundaries of the following erven, so as to exclude them from this area: The said Erf 1998 and Erven 1991, 2854, 2853, 2452 (Public Place), 2770, 2444, 2443, 2442, 2949, 2440, 2439, 2438, 2437, 2436, 2435, 2434, 2631, 2632, 2633, 2635, 2519 (Oranjezicht Township Extension 4, General Plan TP 1722), 2273 [Oranjezicht Township Extension 3, TP 462 SD (3890)] and Erf 1088, Oranjezicht, to the Beacon d on the diagram of the last-mentioned erf; thence south-eastwards in a straight line to the westernmost beacon of Erf 941, Oranjezicht; thence south-eastwards along the boundaries of the following properties, so as to exclude them from this area: The said Erf 941 and Erven 2010 (Oranjezicht A Township Extension 1, General Plan TP 308), 867 [Oranjezicht A Township, General Plan TP 8 n (4661)], 2213 [Oranjezicht A Township Extension 2, General Plan TP 206 SD (3364)], the said Erf 867 and Erf 2517, Oranjezicht, to the south-eastern beacon of Erf 2793, Oranjezicht; thence eastwards in a straight line connecting the last-mentioned beacon with the south-western beacon of Erf 1704, Vredehoek, to a point where the said straight line intersects the western boundary of Erf 1160, Vredehoek; thence south-eastwards along the western boundary of the last-mentioned erf to its southernmost beacon; thence north-eastwards, in a straight line, across Deer Park Drive, to the southernmost beacon of Erf 1164, Vredehoek; thence north-eastwards along the boundaries of the said Erf 1164 and Erven 2115 and 2113, Vredehoek (Vredehoek

van Erf 1164, Vredehoek; daarvandaan noordooswaarts met die grense langs van genoemde Erf 1164 en Erwe 2115 en 2113, Vredehoek (die dorp Vredehoek-uitbreiding 4), Algemene Plan TP 7071), sodat hulle van hierdie gebied uitgesluit word, tot by die oostelike baken van laasgenoemde erf; daarvandaan noordooswaarts in 'n reguit lyn tot by die noordelike baken van Erf 1815, Vredehoek; daarvandaan suidooswaarts en noordooswaarts met die grense langs van genoemde Erf 1815, sodat dit by hierdie gebied ingesluit word, en die grense van Erf 12712, Kaapstad, sodat dit van hierdie gebied uitgesluit word, tot by die suidoostelike baken van laasgenoemde erf; daarvandaan algemeen ooswaarts en suidwaarts in reguit lyne deur koördinaatpunte 69, 65, 61, 56, 55, 54 en 37 en dan deur al die opeenvolgende punte van 36 tot 1²⁾; daarvandaan van punt 1 noordwaarts tot by die oostelike baken van Erf 30349, Kaapstad; daarvandaan noordwaarts en met die grense langs van genoemde Erf 30349 en Erwe 30332 en 44201, Kaapstad, sodat hulle van hierdie gebied uitgesluit word, tot by 'n koördinaatpunt H op die suidwestelike grens van laasgenoemde erf; daarvandaan suidweswaarts in 'n reeks reguit lyne deur koördinaatpunt G, Bakens X en W op die diagram van Erf 46165, Kaapstad, en koördinaatpunte F, E, D, C en B tot by A³⁾; daarvandaan noordweswaarts in 'n reguit lyn tot by die oostelike baken van Plaas 862, Kaap; daarvandaan suidweswaarts met die grense van die volgende eienomme langs sodat hulle by hierdie gebied ingesluit word: Genoemde Plaas 862, Kaap, die plaas Paradys 870, Kaap, die Plaas 872, Kaap, en die plaas Lübberts Gift 871, Kaap, tot by die suidelike baken van laasgenoemde plaas; daarvandaan suidooswaarts met die noordoostelike grens van Plaas 875, Kaap, langs tot by die noordwestelike baken van Erf 242, Bishopscourt; daarvandaan suidweswaarts met die noordwestelike grens van genoemde Erf 242, Bishopscourt, langs tot by die suidwestelike baken daarvan; daarvandaan weswaarts en suidweswaarts met die grense langs van genoemde Plaas 875 en Plaas 876, Kaap, tot by 'n punt waar die suidoostelike grens van genoemde Plaas 876 die noordwestelike grens van Erf 112, Constantia, kruis; daarvandaan noordweswaarts met die noordoostelike grense langs van genoemde Erf 112 en Erf 114, Constantia, tot by die noordwestelike baken van laasgenoemde erf; daarvandaan suidweswaarts met die suidoostelike grens langs van Gedeelte 2 van Plaas 883, Kaap, die oostelike grens van Erf 83, Constantia, en die noordoostelike en suid-oostelike grense van Erf 124, Constantia, tot by die suidelike baken van laasgenoemde erf; daarvandaan suidweswaarts en noordweswaarts met die suidoostelike en suidwestelike grense langs van Gedeelte 1 van die plaas Bel Ombre 895, Kaap, en die suidwestelike grens van die plaas Cecilia 884, Kaap, tot by die suidelike baken van laasgenoemde plaas; daarvandaan noordweswaarts in 'n reguit lyn tot by die noordoostelike baken van Erf 1785, Houtbaai; daarvandaan suidweswaarts en weswaarts met die grense langs van genoemde Erf 1785 en Erf 1516, Houtbaai, tot by die noordelike baken van Erf 1788, Houtbaai; daarvandaan suidwaarts en ooswaarts met die grense langs van genoemde Erf 1788 tot by die oostelike baken daarvan; daarvandaan suidooswaarts in 'n reguit lyn tot by die oostelike baken van Erf 1043, Constantia; daarvandaan suidooswaarts in 'n reguit lyn tot by die suidelike baken van Erf 1046, Constantia; daarvandaan suidooswaarts met die grense van Erf 1069, Constantia; langs tot by Baken L op die diagram daarvan; daarvandaan suidweswaarts en met die grense van Erf 1119 (Openbare Ruimte), Constantia, langs, aangedui op Algemene Plan TP 1221 van die dorp High Constantia, tot by Baken Riv 1 op die Werkplan van die Opmetingsrekords E 2273/1977; daarvandaan suidweswaarts, noordweswaarts en suidweswaarts in 'n reeks reguit lyne deur Bakens Cnr 3 en Cnr 2 tot by Cn 1 Bn, aangedui op genoemde Werkplan van die Opmetingsrekords E 2273/1977; daarvandaan suid-

Township Extension 4, General Plan TP 7071), so as to exclude them from this area, to the easternmost beacon of the last-mentioned erf; thence north-eastwards in a straight line to the northernmost beacon of Erf 1815, Vredehoek; thence south-eastwards and north-eastwards along the boundaries of the said Erf 1815, so as to include it in this area, and the boundaries of Erf 12712, Cape Town, so as to exclude it from this area, to the south-eastern beacon of the latter erf; thence generally eastwards and southwards, in straight lines through co-ordinated points 69, 65, 61, 56, 55, 54 and 37 and then through all successive points from 36 to 1²⁾; thence from point 1 northwards to the easternmost beacon of Erf 30349, Cape Town; thence northwards and along the boundaries of the said Erf 30349 and Erven 30332 and 44201, Cape Town, so as to exclude them from this area, to a co-ordinated point H on the south-western boundary of the last-mentioned erf; thence south-westwards in a series of straight lines through co-ordinated point G, Beacons X and W on the diagram of Erf 46165, Cape Town, and co-ordinated points F, E, D, C and B to A³⁾; thence north-westwards in a straight line to the easternmost beacon of Farm 862, Cape; thence south-westwards along the boundaries of the following properties, so as to include them in this area: The said Farm 862, Cape, the farm Paradys 870, Cape, Farm 872, Cape, and the farm Lübberts Gift 871, Cape, to the southernmost beacon of the last-mentioned farm; thence south-eastwards along the north-eastern boundary of Farm 875, Cape, to the north-western beacon of Erf 242, Bishopscourt; thence south-westwards along the north-western boundary of the said Erf 242, Bishopscourt, to its south-western beacon; thence westwards and south-westwards along the boundaries of the said Farm 875 and Farm 876, Cape, to a point where the south-eastern boundary of the said Farm 876 intersects the north-eastern boundary of Erf 112, Constantia; thence north-westwards along the north-eastern boundaries of the said Erf 112 and Erf 114, Constantia, to the north-western beacon of the latter erf; thence south-westwards along the south-eastern boundary of Portion 2 of Farm 883, Cape, the eastern boundary of Erf 83, Constantia, and the north-eastern and south-eastern boundaries of Erf 124, Constantia, to the southernmost beacon of the latter erf; thence south-westwards and north-westwards along the south-eastern and south-western boundaries of Portion 1 of the farm Bel Ombre 895, Cape, and the south-western boundary of the farm Cecilia 884, Cape, to the southernmost beacon of the latter farm; thence north-westwards in a straight line to the north-eastern beacon of Erf 1785, Hout Bay; thence south-westwards and westwards along the boundaries of the said Erf 1785 and Erf 1516, Hout Bay, to the northernmost beacon of Erf 1788, Hout Bay; thence southwards and eastwards along the boundaries of the said Erf 1788 to the easternmost beacon thereof; thence south-eastwards in a straight line to the easternmost beacon of Erf 1043, Constantia; thence south-eastwards in a straight line to the southernmost beacon of Erf 1046, Constantia; thence south-eastwards along the boundaries of Erf 1069, Constantia, to Beacon L on the diagram thereof; thence south-westwards and along the boundaries of Erf 1119 (Public Place), Constantia, as shown on General Plan TP 1221 of High Constantia Township, to Beacon Riv 1 on the Working Plan of Survey Records E 2273/1977; thence south-westwards, north-westwards and south-westwards in a series of straight lines, through the Beacons Cnr 3 and Cnr 2 to Cn 1 Bn, as shown on the said Working Plan of Survey Records E 2273/1977; thence south-eastwards along the north-eastern boundary of the farm Grootbosch 1122, Cape, to the easternmost beacon thereof; thence south-westwards in a straight line to Beacon j on the dia-

ooswaarts met die noordoostelike grens langs van die plaas Grootbosch 1122, Kaap, tot by die oostelike baken daarvan; daarvandaan suidweswaarts in 'n reguit lyn tot by Baken j op die diagram van die plaas Husseys Vlei 1123, Kaap; daarvandaan verder suidweswaarts in 'n reguit lyn tot by die westelike baken van Gedeelte 3 van die plaas Klein Constantia 1121, Kaap; daarvandaan suidooswaarts en met die grense van genoemde Gedeelte 3 langs tot by die suidwestelike baken daarvan; daarvandaan suidweswaarts en met die grense van die volgende eiendomme langs sodat hulle van hierdie gebied uitgesluit word: Erwe 3021, 3022, 3023, 3346, 3355, 3353, 3368, 3374 (die dorp Constantia-uitbreiding 32, Algemene Plan TP 9380), 7131, 7130, 3390, 3399, 3397, 3389, 3505 (die dorp Dennendal, Algemene Plan TP 8077), 8137, 3586 (die dorp Drumblair, Algemene Plan TP 8112), 3663, 3664, 6233, 6232, 3665, 6231, 6229 (Openbare Ruimte), genoemde Erf 3663 en Erwe 7802, 4573 en 4571, genoemde Erf 3663 en Erwe 4576, 4581, 4580, 4585, 4591, 4594, 4593, 4726, 5290, 4602, 4604, 4605 en 4609, Constantia (Onderverdeelde Landgoed Prospect Forest, Algemene Plan TP 1142), tot by die suidelike baken van laasgenoemde erf; daarvandaan suidooswaarts in 'n reguit lyn tot by Baken d op die diagram van Erf 4664, Constantia; daarvandaan suidooswaarts in 'n reguit lyn tot by die noordwestelike baken van Erf 4669, Constantia; daarvandaan suidooswaarts met die suidwestelike grens van genoemde Erf 4669, Constantia, langs tot by die suidelike baken daarvan; daarvandaan suidooswaarts in 'n reguit lyn tot by die westelike baken van Erf 108272, Kaapstad; daarvandaan suidooswaarts tot by Baken M¹ op die diagram van genoemde Erf 108272, Kaapstad; daarvandaan noordooswaarts in 'n reguit lyn tot by Baken H¹ op die diagram van genoemde Erf 108272, Kaapstad; daarvandaan noordooswaarts en suidooswaarts met die noordwestelike en noordoostelike grense langs van Erf 84812, Kaapstad, en die suidwestelike grens van Erf 84820, Kaapstad, tot by die suidelike baken van laasgenoemde erf; daarvandaan verder suidooswaarts met die suidwestelike grens van Boyesrylaan langs tot by die noordoostelike baken van Erf 93290, Kaapstad; daarvandaan suidooswaarts met die noordoostelike grens langs van genoemde Erf 93290, Kaapstad, sodat dit by hierdie gebied ingesluit word, tot by die oostelike baken daarvan; daarvandaan suidooswaarts in 'n reguit lyn tot by die noordwestelike baken van Erf 86308, Kaapstad; daarvandaan suidwaarts met die westelike grense langs van genoemde Erf 86308 en Erf 86307, Kaapstad, sodat hulle van hierdie gebied uitgesluit word, tot by die suidwestelike baken van laasgenoemde erf; daarvandaan suidwaarts in 'n reguit lyn tot by die noordoostelike baken van Erf 93659, Kaapstad; daarvandaan suidweswaarts en suidwaarts met die grense langs van genoemde Erf 93659 en Erf 86362, Kaapstad, sodat hulle by hierdie gebied ingesluit word, tot by die suidoostelike baken van laasgenoemde erf; daarvandaan suidweswaarts in 'n reguit lyn oor Parkweg tot by die noordwestelike baken van Erf 86374, Kaapstad; daarvandaan suidwaarts met die westelike grense langs van genoemde Erf 86374 en Erf 93304, Kaapstad, sodat hulle van hierdie gebied uitgesluit word, tot by die suidwestelike baken van laasgenoemde erf; daarvandaan weswaarts en algemeen suidwaarts met die grense van die volgende eiendomme langs sodat hulle van hierdie gebied uitgesluit word: Erwe 86379, 93944, oor 'n pad 12,59 m wyd, Erwe 86389 en 86393, oor 'n pad 12,59 m wyd, en Erf 86569, tot by die suidoostelike baken van Erf 86569; daarvandaan algemeen suid en suidweswaarts deur die punte 1, 2, 3, 4, 5, 6, 7, 8 en 9 tot by Baken e op die diagram van Erf 88756; daarvandaan suidweswaarts tot by Baken f op genoemde diagram van genoemde Erf 88756; daarvandaan suidweswaarts met die suidoostelike grense langs van Erwe 88772 en 88754, sodat hulle by hierdie gebied ingesluit word, tot by die suidelike baken van laasgenoemde erf; daarvandaan suid-

gram of the farm Husseys Vlei 1123, Cape; thence further south-westwards in a straight line to the westernmost beacon of Portion 3 of the farm Klein Constantia 1121, Cape; thence south-eastwards and along the boundaries of the said Portion 3 to the south-western beacon thereof; thence south-westwards and along the boundaries of the following properties so as to exclude them from this area: Erven 3021, 3022, 3023, 3346, 3355, 3353, 3368, 3374 (Constantia Township Extension 32, General Plan TP 9380), 7131, 7130, 3390, 3399, 3397, 3389, 3505 (Dennendal Township, General Plan TP 8077), 8137, 3586 (Drumblair Township, General Plan TP 8112), 3663, 3664, 6233, 6232, 3665, 6231, 6229 (Public Place), the said Erf 3663 and Erven 7802, 4573 and 4571, the said Erf 3663 and Erven 4576, 4581, 4580, 4585, 4591, 4594, 4593, 4726, 5290, 4602, 4604, 4605 and 4609, Constantia (Prospect Forest Subdivided Estate, General Plan TP 1142), to the southernmost beacon of the last-mentioned erf; thence south-eastwards in a straight line to Beacon d on the diagram of Erf 4664, Constantia; thence south-eastwards in a straight line to the north-western beacon of Erf 4669, Constantia; thence south-eastwards along the south-western boundary of the said Erf 4669, Constantia, to its southernmost beacon; thence south-eastwards in a straight line to the westernmost beacon of Erf 108272, Cape Town; thence south-eastwards to Beacon M¹ on the diagram of the said Erf 108272, Cape Town; thence north-eastwards in a straight line to Beacon H¹ on the diagram of the said Erf 108272, Cape Town; thence north-eastwards and south-eastwards along the north-western and north-eastern boundaries of Erf 84812, Cape Town, and the south-western boundary of Erf 84820, Cape Town, to the southernmost beacon of the latter erf; thence further south-eastwards along the south-western boundary of Boyes Drive to the northernmost beacon of Erf 93290, Cape Town; thence south-eastwards along the north-eastern boundary of the said Erf 93290, Cape Town, so as to include it in this area, to its easternmost beacon; thence south-eastwards in a straight line to the north-western beacon of Erf 86308, Cape Town; thence southwards along the western boundaries of the said Erf 86308 and Erf 86307, Cape Town, so as to exclude them from this area, to the south-western beacon of the latter erf; thence southwards in a straight line to the north-eastern beacon of Erf 93659, Cape Town; thence south-westwards and southwards along the boundaries of the said Erf 93659 and Erf 86362, Cape Town, so as to include them in this area, to the south-eastern beacon of the latter erf; thence south-westwards in a straight line, across Park Road, to the north-western beacon of Erf 86374, Cape Town; thence southwards along the western boundaries of the said Erf 86374 and Erf 93304, Cape Town, so as to exclude them from this area, to the south-western beacon of the latter erf; thence westwards and generally southwards along the boundaries of the following properties, so as to exclude them from this area: Erven 86379 and 93944, across a road 12,59 m wide, Erven 86389 and 86393, across a road 12,59 m wide, and Erf 86569, to the south-eastern beacon of Erf 86569; thence generally south and south-westwards, through the points 1, 2, 3, 4, 5, 6, 7, 8 and 9, to Beacon e on the diagram of Erf 88756; thence south-westwards to Beacon f on the said diagram of the said Erf 88756; thence south-westwards along the south-eastern boundaries of Erven 88772 and 88754, so as to include them in this area, to the southernmost beacon of the latter erf; thence south-westwards through point 10 to the easternmost beacon of Erf 88764; thence generally south-westwards along the boundaries of the said Erf 88764 and Erf 88755, so as to include them in this area, to the southernmost beacon of the

weswaarts deur punt 10 tot by die oostelikste baken van Erf 88764; daarvandaan algemeen suidweswaarts met die grense langs van genoemde Erf 88764 en Erf 88755, sodat hulle by hierdie gebied ingesluit word, tot by die suidelikste baken van laasgenoemde erf; daarvandaan algemeen suidweswaarts deur die punte 11, 12, 13, 14, 15 en 16⁴⁾; tot by die noordoostelike baken van Erf 89895; daarvandaan suidooswaarts tot by die oostelikste baken van genoemde Erf 89895; daarvandaan suidweswaarts met die suidoostelike grense langs van genoemde Erf 89895 en Erf 89896, Kaapstad, tot by die suidwestelike baken van laasgenoemde erf; daarvandaan in 'n reguit lyn oor Lochweg tot by die suidoostelike baken van Erf 90220, Kaapstad; daarvandaan suidweswaarts met die grense van die volgende eiendomme langs sodat hulle by hierdie gebied ingesluit word: Genoemde Erf 90220 en Erwe 90219, 90216, 90218, 90217, genoemde Erf 90216, oor 'n pad 15,74 m wyd en Erf 90203, Kaapstad, tot by die suidelikste baken van laasgenoemde erf; daarvandaan suidooswaarts met die grense van die volgende erwe langs sodat hulle van hierdie gebied uitgesluit word. Erwe 90204, 90205, 90206 en 90207, Kaapstad, tot by die suidelikste baken van laasgenoemde erf; daarvandaan suidooswaarts in 'n reguit lyn tot by die noordwestelike baken van Plaas 921 Kaap [Plan 17 CC (5292)]; daarvandaan suidooswaarts in 'n reguit lyn, tot by die suidwestelike baken van Erf 89947, Kaapstad; daarvandaan suidweswaarts en met die grense van genoemde Plaas 921, tot by Baken a op die diagram van Erf 90233, Kaapstad; daarvandaan weswaarts met die grense van genoemde Erf 90233 langs, sodat dit van hierdie gebied uitgesluit word, tot by Baken d op die diagram daarvan; daarvandaan suidweswaarts met die suidoostelike grens langs van genoemde Plaas 921, Kaap, tot by die westelikste baken van Erf 90060, Kaapstad; daarvandaan suidwaarts in 'n reguit lyn tot by die noordoostelike baken van Erf 90087, Kaapstad; daarvandaan weswaarts met die suidelike grens van genoemde Plaas 921, Kaap, langs tot by die suidwestelike baken daarvan; daarvandaan suidweswaarts met die noordelike grens van Erf 90104, Kaapstad, langs, sodat dit van hierdie gebied uitgesluit word, tot by die noordwestelike baken daarvan; daarvandaan noordweswaarts in 'n reguit lyn tot by die noordoostelike baken van Erf 90118, Kaapstad; daarvandaan noordweswaarts met die grense van die volgende erwe langs sodat hulle van hierdie gebied uitgesluit word: Erwe 90118, 90119, 90120, 90121, 90122, 90123, 90124, 90125, 90126, 90127, 90128, 90129, 90130, 90131, 90132, 90133, 90134, 90135, 90136 en 90137, tot by die noordwestelike baken van laasgenoemde erf; daarvandaan oor die pad in 'n reguit lyn tot by die noordoostelike baken van Erf 90141, Kaapstad; daarvandaan noordweswaarts met die grense van die volgende erwe langs sodat hulle van hierdie gebied uitgesluit word: Genoemde Erf 90141 en Erwe 90142, 90176, 90175, 90144, 90147, 90148, 90149, 90150, 90154 en 90238, tot by die suidoostelike baken van Erf 90165, Kaapstad; daarvandaan noordooswaarts tot by die suidelikste baken van Erf 90166, Kaapstad; daarvandaan noordweswaarts met die grense van die volgende erwe langs sodat hulle by hierdie gebied ingesluit word: Genoemde Erf 90166 en Erf 90168, Kaapstad, tot by die westelikste baken van laasgenoemde erf; daarvandaan noordooswaarts en noordweswaarts in 'n reeks reguit lyne deur punte A, B en C op Algemene Plan M 51 (3291) van die Mayville-landgoed en B, C, D, E, F, G en H tot I op Algemene Plan C 55 (2245) van die Clovelly-landgoed; daarvandaan suidweswaarts in 'n reguit lyn tot by Baken b op die diagram van Erf 88805, Kaapstad; daarvandaan noordweswaarts in 'n reguit lyn tot by Baken v op genoemde diagram van genoemde Erf 88805, Kaapstad; daarvandaan suidooswaarts in 'n reguit lyn tot by die noordelikste baken van Erf 12043, Vishoek; daarvandaan suidooswaarts met die grense van genoemde Erf 12043 langs tot by

latter erf; thence generally south-westwards through the points 11, 12, 13, 14, 15 and 16⁴⁾ to the north-eastern beacon of Erf 89895; thence south-eastwards to the easternmost beacon of the said Erf 89895; thence south-westwards along the south-eastern boundaries of the said Erf 89895 and Erf 89896, Cape Town, to the south-western beacon of the latter erf; thence in a straight line across Loch Road to the south-eastern beacon of Erf 90220, Cape Town; thence south-westwards along the boundaries of the following properties, so as to include them in this area: The said Erf 90220 and Erven 90219, 90216, 90218, 90217, the said Erf 90216, across a road 15,74 m wide, and Erf 90203, Cape Town, to the southernmost beacon of the last-mentioned erf; thence south-eastwards along the boundaries of the following erven so as to exclude them from this area: Erven 90204, 90205, 90206 and 90207, Cape Town, to the southernmost beacon of the last-mentioned erf; thence south-eastwards in a straight line to the north-western beacon of Farm 921, Cape [Plan 17 CC (5292)]; thence south-eastwards in a straight line, to the south-western beacon of Erf 89947, Cape Town; thence south-westwards and along the boundaries of the said Farm 921, to Beacon a on the diagram of Erf 90233, Cape Town; thence westwards along the boundaries of the said erf 90233, so as to exclude it from this area, to Beacon d on the diagram thereof; thence south-westwards along the south-eastern boundary of the said Farm 921, Cape, to the westernmost beacon of Erf 90060, Cape Town; thence southwards in a straight line to the north-eastern beacon of Erf 90087, Cape Town; thence westwards along the southern boundary of the said Farm 921, Cape, to the south-western beacon thereof; thence south-westwards along the northern boundary of Erf 90104, Cape Town, so as to exclude it from this area, to the north-western beacon thereof, thence north-westwards in a straight line to the north-eastern beacon of Erf 90118, Cape Town; thence north-westwards along the boundaries of the following erven, so as to exclude them from this area: Erven 90118, 90119, 90120, 90121, 90122, 90123, 90124, 90125, 90126, 90127, 90128, 90129, 90130, 90131, 90132, 90133, 90134, 90135, 90136 and 90137, to the north-western beacon of the last-mentioned erf; thence across the road in a straight line to the north-eastern beacon of Erf 90141, Cape Town; thence north-westwards along the boundaries of the following erven so as to exclude them from this area: The said Erf 90141 and Erven 90142, 90176, 90175, 90144, 90147, 90148, 90149, 90150, 90154 and 90238, to the south-eastern beacon of Erf 90165, Cape Town; thence north-eastwards to the southernmost beacon of Erf 90166, Cape Town; thence north-westwards along the boundaries of the following erven, so as to include them in this area: The said Erf 90166 and Erf 90168, Cape Town, to the westernmost beacon of the latter erf; thence north-eastwards and north-westwards in a series of straight lines through points A, B and C on General Plan M 51 (3291) of the Mayville Estate and B, C, D, E, F, G and H to I on General Plan C 55 (2245) of the Clovelly Estate; thence south-westwards in a straight line to Beacon b on the diagram of Erf 88805, Cape Town; thence north-westwards in a straight line to Beacon v on the said diagram of the said Erf 88805, Cape Town; thence south-eastwards in a straight line to the northernmost beacon of Erf 12043, Fish Hoek; thence south-eastwards along the boundaries of the said Erf 12043 to the north-eastern beacon of Erf 12044, Fish Hoek;

die noordoostelike baken van Erf 12044, Vishoek; daarvandaan weswaarts met die noordelike grens langs van genoemde Erf 12044 (die dorp Vishoek-uitbreiding 7, Algemene Plan TP 1075), sodat dit van hierdie gebied uitgesluit word, tot by die westelike baken daarvan; daarvandaan noordweswaarts met die suidwestelike grens van Erf 12050, Vishoek, langs, sodat dit by hierdie gebied ingesluit word, tot by die suidwestelike baken daarvan; daarvandaan noordweswaarts met die verlenging van die suidwestelike grens van genoemde Erf 12050, Vishoek, langs tot by 'n punt waar dit die suidoostelike grens van die plaas Schildersgat Kop 955, Kaap, kruis; daarvandaan suidweswaarts en met die grens van genoemde Plaas 955, Kaap, langs tot by die westelike baken daarvan; daarvandaan noordweswaarts in 'n reguit lyn tot by Trigonometriestasie 188, Dassenberg, geleë op die plaas Dassenberg 940, Kaap; daarvandaan noordooswaarts in 'n reguit lyn tot by Baken W¹ op die diagram van Gedeelte 30 van die plaas De Goede Hoop 934, Kaap; daarvandaan suidooswaarts met die suidwestelike grense langs van genoemde Gedeelte 30 van die plaas De Goede Hoop 934, Kaap, en Gedeelte 3 van die plaas Dassenberg 940, Kaap, tot by die oostelike baken van laasgenoemde eiendom sodat hierdie twee gedeeltes van hierdie gebied uitgesluit word; daarvandaan suidooswaarts en met die suidwestelike en suidoostelike grense langs van Gedeelte 15 van Plaas 934, Kaap, tot by die oostelike baken daarvan sodat genoemde gedeelte uitgesluit word van hierdie gebied; daarvandaan in 'n noordoostelike rigting met die suidoostelike grens langs van Gedeelte 9 van Plaas 934, Kaap, tot by Baken b daarop; daarvandaan noordooswaarts in 'n reguit lyn tot by Baken E¹ op die diagram van Plaas 1368, Kaap; daarvandaan noordweswaarts in 'n reguit lyn tot by die oostelike baken van Gedeelte 31 van Plaas 934, Kaap; daarvandaan noordweswaarts met die noordoostelike grens van laasgenoemde eiendom langs, sodat dit van hierdie gebied uitgesluit word, tot by die noordelike baken daarvan; daarvandaan noordweswaarts in 'n reguit lyn tot by die oostelike baken van Gedeelte 36 van Plaas 934, Kaap; daarvandaan noordweswaarts met die noordoostelike grens van laasgenoemde eiendom langs, sodat dit van hierdie gebied uitgesluit word, tot by die noordelike baken daarvan; daarvandaan noordweswaarts in 'n reguit lyn tot by Baken Cx¹ op die werksplan van Meetstuk E1141/1983; daarvandaan noordweswaarts in reguit lyne en deur Baken Bx tot by Baken Ax¹ op genoemde E1141/1983; daarvandaan noordooswaarts in 'n reguit lyn tot by die oostelike baken van Gedeelte 13 van Plaas 931, Kaap; daarvandaan noordooswaarts in 'n reeks reguit lyne deur Bakens CL1 tot CL12, 131^a tot 131^c, Y, Y¹, a tot i en J tot P, almal in E1454/1983; daarvandaan noordooswaarts in 'n reguit lyn tot by Baken A op Mineraalregte Diagram 1639/1979; daarvandaan suidweswaarts en met die grens van Mineraalgebied 1 langs, sodat dit uit hierdie gebied uitgesluit word, tot by Baken M op die genoemde diagram daarvan; daarvandaan suidweswaarts in 'n reguit lyn tot by Baken l op die diagram van Erf 217, Chapman's Peak (Onderverdeelde Landgoed Chapman's Peak, Algemene Plan TP 1012 LD); daarvandaan suidweswaarts en met die grense langs van genoemde Erf 217, Chapman's Peak, en Gedeelte 25 van Plaas 932, Kaap, sodat hulle van hierdie gebied uitgesluit word, tot by die noordwestelike Baken a van laasgenoemde eiendom; daarvandaan suidweswaarts met die grense van die volgende eiendomme langs sodat hulle uit hierdie gebied uitgesluit word: Genoemde Gedeelte 25 van Plaas 932, Kaap, Erf 217 Chapman's Peak (Onderverdeelde Landgoed Chapman's Peak, Algemene Plan TP 1012) en Erf 216, Chapman's Peak (die dorp Chapman's Peak-uitbreiding 2, Algemene Plan TP 8676) tot by die oostelike baken van Gedeelte 13 van die Plaas 930, Kaap; daarvandaan suidwaarts met die oostelike grens langs van genoemde Gedeelte 13 van Plaas 930, Kaap, sodat dit by hierdie gebied

thence westwards along the northern boundary of the said Erf 12044 (Fish Hoek Township Extension 7, General Plan TP 1075), so as to exclude it from this area, to the westernmost beacon thereof; thence north-westwards along the south-western boundary of Erf 12050, Fish Hoek, so as to include it in this area, to the south-western beacon thereof; thence north-westwards along the prolongation of the south-western boundary of the said Erf 12050, Fish Hoek, to a point where it intersects the south-eastern boundary of the farm Schildersgat Kop 955, Cape; thence south-westwards and along the boundary of the said Farm 955, Cape, to the westernmost beacon thereof; thence north-westwards in a straight line to Trigonometrical Station 188, Dassenberg, situated on the farm Dassenberg 940, Cape; thence north-eastwards in a straight line to Beacon W¹ on the diagram of Portion 30 of the farm De Goede Hoop 934, Cape; thence south-eastwards along the south-western boundaries of the said Portion 30 of the farm De Goede Hoop 934, Cape, and Portion 3 of the farm Dassenberg 940, Cape, to the easternmost beacon of the latter property, so as to exclude these two portions from this area; thence south-eastwards and along the south-western and south-eastern boundaries of Portion 15 of Farm 934, Cape, to the easternmost beacon thereof, so as to exclude the said portion from this area; thence in a north-easterly direction along the south-eastern boundary of Portion 9 of Farm 934, Cape, to Beacon b thereon; thence north-eastwards in a straight line to Beacon E¹ on the diagram of Farm 1368, Cape; thence north-westwards in a straight line to the easternmost beacon of Portion 31 of Farm 934, Cape; thence north-westwards along the north-eastern boundary of the said Portion 31, so as to exclude it from this area, to the northernmost beacon thereof; thence north-westwards in a straight line to the easternmost beacon of Portion 36 of Farm 934, Cape; thence north-westwards along the north-eastern boundary of the last-mentioned property, so as to exclude it from this area to the northernmost beacon thereof; thence north-westwards in a straight line to Beacon Cx¹ on the Working Plan of Survey Record E 1141/1983; thence north-westwards in straight lines and through Beacon Bx to Beacon Ax¹ on said E 1141/1983; thence north-eastwards in a straight line to the easternmost beacon of Portion 13 of Farm 931, Cape; thence north-eastwards in a series of straight lines through Beacons CL 1 to CL 12, 131^a to 131^c, Y, Y¹, a to i and J to P all in E 1454/1983; thence north-eastwards in a straight line to Beacon A on Mineral Rights Diagram 1639/1979; thence south-westwards and along the boundary of Mineral Area 1, so as to exclude it from this area, to Beacon M on the said diagram thereof; thence south-westwards in a straight line to Beacon l on the diagram of Erf 217, Chapman's Peak (Chapman's Peak Subdivided Estate, General Plan TP 1012 LD); thence south-westwards and along the boundaries of the said Erf 217, Chapman's Peak, and Portion 25 of Farm 932, Cape, so as to exclude them from this area, to the north-western Beacon (a) of the latter property; thence south-westwards along the boundaries of the following properties, so as to exclude them from this area: The said Portion 25 of Farm 932, Cape, Erf 217, Chapman's Peak (Chapman's Peak Subdivided Estate, General Plan TP 1012) and Erf 216, Chapman's Peak (Chapman's Peak Township Extension 2, General Plan TP 8676), to the easternmost beacon of Portion 13 of Farm 930, Cape; thence southwards along the eastern boundary of the said Portion

ingesluit word, tot by die suidelikste baken daarvan; daarvandaan suidooswaarts en met die grens langs van Gedeelte 2 van Plaas 948, Kaap, sodat dit by hierdie gebied ingesluit word, tot by die noordelikste baken van Gedeelte 10 van Plaas 948, Kaap; daarvandaan suidooswaarts en suidwaarts met die grens van laasgenoemde eiendom langs, sodat dit by hierdie gebied ingesluit word, tot by die noordelikste baken van Gedeelte 4 van Plaas 945, Kaap; daarvandaan weswaarts in 'n reguit lyn tot by die noordoostelike baken van Gedeelte 28 van Plaas 948, Kaap; daarvandaan weswaarts en suidwaarts met die grens van laasgenoemde eiendom langs, sodat dit van hierdie gebied uitgesluit word, tot by Baken J op Pypeleidingserwituut-diagram 17/1978; daarvandaan suidweswaarts in reguit lyne deur Baken H op genoemde Pypeleidingserwituut-diagram tot by Baken G daarop; daarvandaan suidweswaarts in 'n reguit lyn tot by Baken N op Pypeleidingserwituut-diagram 9508/1977; daarvandaan noordweswaarts in 'n reeks reguit lyne deur Bakens M, L, K en J tot H op genoemde Pypeleidingserwituut-diagram 9509/1977; daarvandaan noordweswaarts in reguit lyne deur Baken G tot by Baken F op Pypeleidingserwituut-diagram 9509/1977; daarvandaan noordwaarts in 'n reguit lyn deur Trigonometriestasie 182, Klein Slangkop, tot waar dit die laagwatermerk van die Atlantiese Oseaan kruis; daarvandaan in 'n algemene noordelike rigting met genoemde laagwatermerk langs tot waar dit die verlenging, in 'n suidwestelike rigting, kruis van die suidoostelike grens van Erf 2736, Houtbaai; daarvandaan noordooswaarts met genoemde verlenging en grens en die noordoostelike grens van Erf 2736, Houtbaai, langs, sodat dit van hierdie gebied uitgesluit word, tot by die noordelikste baken daarvan; daarvandaan noordooswaarts in 'n reguit lyn tot by die suidelikste baken van Erf 1079, Houtbaai; daarvandaan noordooswaarts en met die grense van die volgende erwe langs sodat hulle van hierdie gebied uitgesluit word: Erwe 1079, 1080, 1081 en 1083, Houtbaai, tot by die oostelikste baken van laasgenoemde erf; daarvandaan noordooswaarts met die suidoostelike grens van Erf 1072, Houtbaai, langs, tot by Baken LEAN op Opmetingsrekords E 346/1978 (geliassseer in die Kantoor van die Landmeter-generaal, Kaap); daarvandaan noordweswaarts in 'n reguit lyn tot by die oostelikste baken van Erf 2500, Houtbaai; daarvan noordweswaarts en met die grense van die volgende erwe langs sodat hulle van hierdie gebied uitgesluit word: Genoemde Erf 2500 en Erwe 2896, 2895, 2898, 666 en 833 Houtbaai, tot by die noordoostelike baken van laasgenoemde erf; daarvandaan noordooswaarts in 'n reguit lyn tot by die noordoostelike baken van Erf 2843, Houtbaai; daarvandaan noordooswaarts in 'n reguit lyn tot by die westelikste baken van Erf 2286 (Openbare Ruimte), Houtbaai, aangedui op Algemene Plan TP 1438 van die dorp Houtbaai-uitbreiding 11; daarvandaan noord-ooswaarts met die grense van genoemde Erf 2286, Houtbaai, langs, sodat dit by hierdie gebied ingesluit word, tot by die oostelikste baken daarvan; daarvandaan noordooswaarts met die grense van die volgende erwe langs sodat hulle van hierdie gebied uitgesluit word: Erwe 1458, 1507, 3351, 3350, 3349, 3348, 3347, 3346, 3345 en 2754, Houtbaai, tot by die oostelikste baken van laasgenoemde erf; daarvandaan ooswaarts in 'n reguit lyn tot by die suidelikste baken van Erf 3063, Houtbaai; daarvandaan noordooswaarts en met die grense van die volgende erwe langs sodat hulle van hierdie gebied uitgesluit word: Genoemde Erf 3063 en Erwe 1490, 3062 en 3061, Houtbaai, tot by die noordelikste baken van laasgenoemde erf; daarvandaan noordooswaarts in 'n reguit lyn tot by die suidelikste baken van Erf 4241, Houtbaai; daarvandaan noordooswaarts met die suidoostelike grense langs van genoemde Erf 4241 en Erwe 4240 en 4239, Houtbaai, sodat hulle van hierdie gebied uitgesluit word, tot by die oostelikste baken van laasgenoemde erf; daarvandaan noordooswaarts in 'n reguit lyn tot by die suidelikste baken van Erf

13 of Farm 930, Cape, so as to include it in this area, to the southernmost beacon thereof; thence south-eastwards and along the boundary of Portion 2 of Farm 948, Cape, so as to include it in this area, to the northernmost beacon of Portion 10 of Farm 948, Cape; thence south-eastwards and southwards along the boundary of the latter property, so as to include it in this area, to the northernmost beacon of Portion 4 of Farm 945, Cape; thence westwards in a straight line to the north-eastern beacon of Portion 28 of Farm 948, Cape; thence westwards and southwards along the boundary of last-mentioned property, so as to exclude it from this area, to Beacon J on Pipeline Servitude Diagram 17/1978; thence south-westwards in straight lines through Beacon H on the said Pipeline Servitude diagram, to Beacon G thereon; thence south-westwards in a straight line to the beacon lettered N on Pipeline Servitude Diagram 9508/1977; thence north-westwards, in a series of straight lines, through Beacons M, L, K and J to H on the said Pipeline Servitude Diagram 9508/1977; thence north-westwards in straight lines through Beacon G to Beacon F on Pipelines Servitude Diagram 9509/1977; thence northwards in a straight line through Trigonometrical Station 812, Klein Slangkop, to where it intersects the low-water mark of the Atlantic Ocean; thence in a generally northerly direction along the said low-water mark to where this intersects the prolongation, in a southwesterly direction, of the south-eastern boundary of Erf 2736, Hout Bay; thence north-eastwards along the said prolongation and boundary and the north-eastern boundary of Erf 2736, Hout Bay, so as to exclude it from this area, to the northernmost beacon thereof; thence north-eastwards in a straight line to the southernmost beacon of Erf 1079, Hout Bay; thence north-eastwards and along the boundaries of the following erven, so as to exclude them from this area: Erven 1079, 1080, 1081 and 1083, Hout Bay, to the easternmost beacon of the last-mentioned erf; thence north-eastwards along the south-eastern boundary of Erf 1072, Hout Bay, to beacon LEAN on Survey Records E 346/1878 (filed in the Office of the Surveyor-General, Cape); thence north-westwards in a straight line to the easternmost beacon of Erf 2500, Hout Bay; thence north-westwards and along the boundaries of the following erven, so as to exclude them from this area: The said Erf 2500 and Erven 2896, 2895, 2898, 666 and 833, Hout Bay, to the north-eastern beacon of the last-mentioned erf; thence north-eastwards in a straight line to the north-eastern beacon of Erf 2843, Hout Bay; thence north-eastwards in a straight line to the westernmost beacon of Erf 2286 (Public Place), Hout Bay, as shown on General Plan TP 1438 of Hout Bay Township Extension 11; thence north-eastwards along the boundaries of the said Erf 2286, Hout Bay, so as to include it in this area, to the easternmost beacon thereof; thence north-eastwards along the boundaries of the following erven so as to exclude them from this area: Erven 1458, 1507, 3351, 3350, 3349, 3348, 3347, 3346, 3345 and 2754, Hout Bay, to the easternmost beacon of the last-mentioned erf; thence eastwards in a straight line to the southernmost beacon of Erf 3063, Hout Bay; thence north-eastwards and along the boundaries of the following erven, so as to exclude them from this area: The said Erf 3063 and Erven 1490, 3062 and 3061, Hout Bay, to the northernmost beacon of the last-mentioned erf; thence north-eastwards in a straight line to the southernmost beacon of Erf 4241, Hout Bay; thence north-eastwards along

1592, Houtbaai; daarvandaan noordooswaarts en met die grense van die volgende erwe langs sodat hulle van hierdie gebied uitgesluit word: Genoemde Erf 1592 en Erwe 1604, 1616, 1618, 1600, 4008, 4009, 3743, 3744 en 4010, genoemde Erf 1600, Erf 4011, genoemde Erf 1600, Erf 4013, genoemde Erf 1600 en Erwe 1729 en 1730, Houtbaai, tot by die noordelike baken van laasgenoemde erf; daarvandaan noordweswaarts met die noordoostelike grens van Erf 1731, Houtbaai, langs, tot by die oostelike baken van Erf 3079, Houtbaai; daarvandaan suidweswaarts met die grense van die volgende erwe langs sodat hulle by hierdie gebied ingesluit word: Genoemde Erf 3079, oor 'n pad 9,45 m wyd, en Erwe 1737, 3560, 3559, 3558, 2977, 2939 en 3720, Houtbaai, tot by die suidwestelike Baken (G) van laasgenoemde erf; daarvandaan noordwaarts en met die grense langs van Erwe 1437 en 4382, Houtbaai, sodat hulle van hierdie gebied uitgesluit word, tot by die noordelike baken van Erf 4022 (pad); daarvandaan suidwaarts in 'n reguit lyn tot by noordoostelike Baken b van Erf 2069, Houtbaai; daarvandaan suidooswaarts met die grense van die volgende erwe langs sodat hulle by hierdie gebied ingesluit word: Genoemde Erf 2069 en Erf 3209 (Openbare Ruimte), Houtbaai, aangedui op Algemene Plan TP 9119 van die dorp Mount Rhodes, tot by die suidelike baken van laasgenoemde erf; daarvandaan suidooswaarts met die noordoostelike grens van Erf 2060, Houtbaai, langs, tot by die noordoostelike baken daarvan; daarvandaan suidweswaarts in 'n reguit lyn tot by die westelike baken van Erf 2055, Houtbaai; daarvandaan suidooswaarts in 'n reguit lyn tot by die westelike baken van Erf 4030, Houtbaai (die dorp Houtbaai-uitbreiding 2, Algemene Plan TP 603); daarvandaan suidweswaarts met die grense langs van genoemde Erf 4030, Erf 1220 (die dorp Shangri La, Algemene Plan TP 160) en Erf 1211, Houtbaai (Algemene Plan TP 10277 van Houtbaai-uitbreiding 30), sodat hulle van hierdie gebied uitgesluit word, tot by die noordelike baken van Erf 3802 (Openbare Ruimte), Houtbaai, aangedui op Algemene Plan TP 10277 van Houtbaai-uitbreiding 30; daarvandaan suidooswaarts en met die grens langs van genoemde Erf 3802 (Openbare Ruimte), Houtbaai, sodat dit by hierdie gebied ingesluit word, tot by die suidwestelike baken daarvan; daarvandaan suidooswaarts en met die grense van die volgende erwe langs sodat hulle by hierdie gebied ingesluit word: Erwe 3476, 3477, 1212 en 1510, Houtbaai, tot by die oostelike baken van laasgenoemde erf; daarvandaan suidooswaarts met die grense langs van Erwe 1860 en 1204, Houtbaai, sodat hulle van hierdie gebied uitgesluit word, tot waar die verlenging van die suidwestelike grens van genoemde Erf 1204, Houtbaai, die laagwatermerk (Atlantiese Oseaan) kruis; daarvandaan noordweswaarts met genoemde laagwatermerk van die Atlantiese Oseaan langs tot by die punt waar die verlenging, in 'n noordwestelike rigting, van die noordoostelike grens van Erf 1294, Houtbaai, genoemde laagwatermerk van die Atlantiese Oseaan kruis; daarvandaan suidooswaarts met genoemde verlenging van die noordoostelike grens van Erf 1294, Houtbaai, langs, tot by die westelike baken van Erf 2023, Houtbaai, aangedui op Algemene Plan TP 1019 van die dorp Houtbaai-uitbreiding 3; daarvandaan noordooswaarts met die grense langs van genoemde Erf 2023, Erf 2383 (Openbare Ruimte) en Erf 2029 (Openbare Ruimte), Houtbaai, sodat hulle by hierdie gebied ingesluit word, tot by die noordelike baken van laasgenoemde erf; daarvandaan noordweswaarts met die noordoostelike grens langs van Erf 1861, Houtbaai, tot by die noordelike baken daarvan; daarvandaan suidweswaarts met die grense langs van Erwe 4015 en 2530, Houtbaai, sodat hulle by hierdie gebied ingesluit word, tot by die punt waar die verlenging van die suidoostelike grens van laasgenoemde erf genoemde laagwatermerk van die Atlantiese Oseaan kruis; daarvandaan noordooswaarts met genoemde laagwatermerk van die Atlantiese Oseaan langs tot by die

the south-eastern boundaries of the said Erf 4241 and Erven 4240 and 4239, Hout Bay, so as to exclude them from this area, to the easternmost beacon of the last-mentioned erf; thence north-eastwards in a straight line to the southernmost beacon of Erf 1592, Hout Bay; thence north-eastwards and along the boundaries of the following erven, so as to exclude them from this area: The said Erf 1592 and Erven 1604, 1616, 1618, 1600, 4008, 4009, 3743, 3744 and 4010, the said Erf 1600, Erf 4011, the said Erf 1600, Erf 4013, the said Erf 1600 and Erven 1729 and 1730, Hout Bay, to the northernmost beacon of the last-mentioned erf; thence north-westwards along the north-eastern boundary of Erf 1731, Hout Bay, to the easternmost beacon of Erf 3079, Hout Bay; thence south-westwards along the boundaries of the following erven, so as to include them in this area: The said Erf 3079, across a road 9,45 m wide and Erven 1737, 3560, 3559, 3558, 2977, 2939 and 3720, Hout Bay, to the south-western Beacon (G) of the last-mentioned erf; thence northwards and along the boundaries of Erven 1437 and 4382, Hout Bay, so as to exclude them from this area, to the northernmost beacon of Erf 4022 (road); thence southwards in a straight line to the north-eastern Beacon (b) of Erf 2069, Hout Bay; thence south-eastwards along the boundaries of the following erven, so as to include them in this area: The said Erf 2069 and Erf 3209 (Public Place), Hout Bay, as shown on General Plan TP 9119 of Mount Rhodes Township, to the southernmost beacon of the latter erf; thence south-eastwards along the north-eastern boundary of Erf 2060, Hout Bay, to the north-eastern beacon thereof; thence south-westwards in a straight line to the westernmost beacon of Erf 2055, Hout Bay; thence south-eastwards in a straight line to the westernmost beacon of Erf 4030, Hout Bay, (Hout Bay Township Extension 2, General Plan TP 603); thence south-westwards along the boundaries of the said Erf 4030, Erf 1220 (Shangri La Township, General Plan TP 160) and Erf 1211, Hout Bay (General Plan TP 10277 of Hout Bay Extension 30), so as to exclude them from this area, to the northernmost beacon of Erf 3802 (Public Place), Hout Bay, as shown on General Plan TP 10277 of Hout Bay Extension 30; thence south-eastwards and along the boundary of the said Erf 3802 (Public Place), Hout Bay, so as to include it in this area, to the south-western beacon thereof; thence south-eastwards and along the boundaries of the following erven, so as to include them in this area: Erven 3476, 3477, 1212 and 1510, Hout Bay, to the easternmost beacon of the last-mentioned erf; thence south-eastwards along the boundaries of Erven 1860 and 1204, Hout Bay, so as to exclude them from this area, to where the prolongation of the south-western boundary of the said Erf 1204, Hout Bay, intersects the low-water mark (Atlantic Ocean); thence north-westwards along the said low-water mark of the Atlantic Ocean to the point where the prolongation, in a north-western direction, of the north-eastern boundary of Erf 1294, Hout Bay, intersects the said low-water mark of the Atlantic Ocean; thence south-eastwards along the said prolongation and north-eastern boundary of Erf 1294, Hout Bay, to the westernmost beacon of Erf 2023, Hout Bay, as shown on General Plan TP 1019 of Hout Bay Township Extension 3; thence north-eastwards along the boundaries of the said Erf 2023, Erf 2383 (Public Place), and Erf 2029 (Public Place), Hout Bay, so as to include them in this area, to the northernmost beacon of the last-mentioned erf; thence north-westwards along the north-eastern boundary of Erf 1861, Hout Bay, to the northernmost beacon thereof; thence south-westwards along the boundaries of Erven 4015 and 2530, Hout Bay, so

punt waar dit gekruis word deur die verlenging, in 'n noord-westelike rigting, van die suidwestelike grens (A-C¹) van Gedeelte 14 van die plaas Oude Kraal 902, Kaap; daarvandaan suidooswaarts met genoemde verlenging langs tot by die westelikste baken van genoemde gedeelte; daarvandaan suidooswaarts en met die grense langs van Gedeeltes 4, 5, 6 en 7 (die dorp Oudekraal, Algemene Plan TP 1781) van die plaas Oude Kraal 902, Kaap, sodat hulle van hierdie gebied uitgesluit word, tot by die oostelikste baken van laasgenoemde gedeelte, die beginpunt.

Die volgende word uitgesluit van die gebied beskryf in 1 hierbo:

Die gedeelte grond aangedui op die diagram van Erf 142, Clifton, gemerk opcb, en bekend as Huurperseel No. 4 (kyk Goewermentskennisgewing 2096/1962, Staatskoerant 402 van 1962-12-21).

2. Suidelike Gebied

Begin by Baken z op die diagram van Erf 682, Ocean View (die dorp Slangkop, Algemene Plan TP 8065); daarvandaan suidweswaarts en met die grense langs van genoemde Erf 682, Ocean View, Erf 683, Ocean View (die dorp Slangkop-uitbreiding 1, Algemene Plan TP 8352) en Erf 685, Ocean View (die dorp Slangkop-uitbreiding 3, Algemene Plan TP 10000) tot by Baken g daarop; daarvandaan in 'n suidoostelike rigting in 'n reguit lyn tot by Baken P op die diagram van genoemde Gedeelte 10 van Plaas 948, Kaap; daarvandaan noordooswaarts in 'n reguit lyn tot by die suidelikste baken van Gedeelte 33 van die plaas Sunny Dale 951, Kaap; daarvandaan suidweswaarts en met die grense van die volgende eiendomme langs sodat hulle van hierdie gebied uitgesluit word: Gedeelte 5 van die plaas Sunny Dale 951, Kaap, Gedeelte 30 van die plaas Sunny Dale 951, Gedeelte 2 van die plaas Poespaskraal 952, Kaap, en die plaas Poespaskraal 952, Kaap, tot by die punt waar die suidelike grens van laasgenoemde plaas die westelike grens van Plaas 953, Kaap, kruis; daarvandaan noordooswaarts in 'n reguit lyn tot by die suidelikste baken van Gedeelte 11 van genoemde Plaas 953, Kaap; daarvandaan noordooswaarts in 'n reguit lyn tot by die westelikste baken van Gedeelte 25 van genoemde Plaas 953, Kaap; daarvandaan suidooswaarts in 'n reguit lyn tot by die suidelikste baken van Gedeelte 19 van genoemde Plaas 953, Kaap; daarvandaan noordooswaarts met die suidoostelike grense langs van genoemde Gedeelte 19 van Plaas 953, Kaap, Gedeelte 1 van Plaas 953, Kaap, en Gedeelte 5 van die plaas Brakke Kloof 959, Kaap, tot by die punt waar die verlenging, in 'n noordwestelike rigting, van die suidwestelike grens van Erf 12293, Vishoek, genoemde suidoostelike grens van Gedeelte 5 van die Plaas 959, Kaap, kruis; daarvandaan suidooswaarts met genoemde verlenging en die noordoostelike grens langs van Erf 12322 (Openbare Ruimte) Vishoek (aangedui op Algemene Plan TP 844 van die dorp Vishoek-uitbreiding 2), die noordwestelike en noordoostelike grense van Erf 8613, Vishoek, oor die 12,59-m-wye pad, en met die noordoostelike grense langs van Erwe 8615 en 8617, Vishoek, tot by die oostelikste baken van laasgenoemde erf; daarvandaan noordooswaarts met die suidoostelike en noordoostelike grense langs van Erf 8612, Vishoek, tot by die noordoostelike baken van genoemde erf; daarvandaan suidooswaarts in 'n reguit lyn tot by die noordelikste baken van Erf 8564, Vishoek; daarvandaan suidooswaarts met die grense van die volgende eiendomme langs sodat hulle by hierdie gebied ingesluit word: Genoemde Erf 8564, Vishoek Erf 8562 [Algemene Plan V27^E (5007)], Erf 12053, Vishoek, en Plaas 964, Kaap, tot by die noordelikste baken van Erf 60, Simonstad; daarvandaan suidwaarts met die westelike grens langs van genoemde Erf 60, Simonstad, sodat dit van hierdie gebied uitgesluit word, tot by die oostelikste baken van Erf 2440 (pad), Simonstad; daarvandaan noordweswaarts met die

as to include them in this area, to the point where the prolongation of the south-eastern boundary of the latter erf intersects the said low-water mark of the Atlantic Ocean; thence north-eastwards along the said low-water mark of the Atlantic Ocean to the point where it is intersected by the prolongation, in a north-westerly direction, of the south-western boundary (A-C¹) of Portion 14 of the farm Oude Kraal 902, Cape; thence south-eastwards along the said prolongation to the westernmost beacon of the said portion; thence south-eastwards and along the boundaries of Portions 4, 5, 6 and 7 (Oudekraal Township, General Plan TP 1781) of the farm Oude Kraal 902, Cape, so as to exclude them from this area, to the easternmost beacon of the last-mentioned portion, the point of beginning.

The following is excluded from the area described in 1 above:

The portion of land shown on the diagram of Erf 142, Clifton, lettered opcb and known as Lease Lot No. 4 (*vide* Government Notice 2906/1962, *Government Gazette* 402, dated 21-12-1962).

2. Southern Area

Beginning at Beacon z on the diagram of Erf 682, Ocean View (Slangkop Township, General Plan TP 8065); thence south-westwards and along the boundaries of the said Erf 682, Ocean View, Erf 683, Ocean View (Slangkop Township Extension 1, General Plan TP 8352) and Erf 685, Ocean View (Slangkop Township Extension 3, General Plan TP 10000) to Beacon g thereon; thence in a south-eastern direction in a straight line to Beacon P on the diagram of the said Portion 10 of Farm 948, Cape; thence north-eastwards in a straight line to the southernmost beacon of Portion 33 of the farm Sunny Dale 951, Cape; thence south-westwards and along the boundaries of the following properties so as to exclude them from this area: Portion 5 of the farm Sunny Dale 951, Cape, Portion 30 of the farm Sunny Dale 951, Portion 2 of the farm Poespaskraal 952, Cape, and the farm Poespaskraal 952, Cape, to the point where the southern boundary of the latter farm intersects the western boundary of Farm 953, Cape; thence north-eastwards in a straight line to the southernmost beacon of Portion 11 of the said Farm 953, Cape; thence north-eastwards in a straight line to the westernmost beacon of Portion 25 of the said Farm 953, Cape; thence south-eastwards in a straight line to the southernmost beacon of Portion 19 of the said Farm 953, Cape; thence north-eastwards along the south-eastern boundaries of the said Portion 19 of Farm 953, Cape, Portion 1 of Farm 953, Cape, and Portion 5 of the farm Brakke Kloof 959, Cape, to the point where the prolongation, in a north-westerly direction, of the south-western boundary of Erf 12293, Fish Hoek, intersects the said south-eastern boundary of Portion 5 of Farm 959, Cape; thence south-eastwards along the said prolongation and the north-eastern boundary of Erf 12322 (Public Place), Fish Hoek (as shown on General Plan TP 844 of Fish Hoek Township Extension 2), the north-western and north-eastern boundaries of Erf 8613, Fish Hoek, across the 12,59 m wide road, and along the north-eastern boundaries of Erven 8615 and 8617, Fish Hoek, to the easternmost beacon of the last-mentioned erf; thence north-eastwards along the south-eastern and north-eastern boundaries of Erf 8612, Fish Hoek, to the north-eastern beacon of the said erf; thence south-eastwards in a straight line to the northernmost beacon of Erf 8564, Fish Hoek; thence south-eastwards along the boundaries of the following properties so as to include them in this area: The said Erf 8564, Fish Hoek, Erf 8562 [General Plan V27^E (5007)], Erf 10253, Fish Hoek, and Farm 964, Cape, to the northernmost beacon of Erf 60, Simon's Town; thence southwards along the western boundary of said Erf 60, Simon's Town, so as to exclude it from this area, to the easternmost beacon of Erf 2440 (road),

noordoostelike grens langs van genoemde Erf 2440, Simonstad, tot by die westelikste baken daarvan; daarvandaan suidooswaarts in 'n reguit lyn tot by die oostelikste baken van Gedeelte 1 van Plaas 963, Kaap; daarvandaan suidooswaarts met die grense langs van Plaas 963, Kaap, tot by die suidelikste baken daarvan; daarvandaan noordweswaarts in 'n reguit lyn tot by die oostelikste baken van Plaas 972, Kaap; daarvandaan suidweswaarts met die suidoostelike grens van genoemde Plaas 972, Kaap, langs, tot by die suidelikste baken daarvan; daarvandaan suidooswaarts in 'n reguit lyn tot by punt L op die Kantoor van die Landmeter-generaal se afskrif van die diagram van Plaas 969, Kaap; daarvandaan suidwaarts en met die grense van laasgenoemde eiendom langs tot by die oostelikste baken daarvan; daarvandaan suidooswaarts in 'n reguit lyn tot by Baken d¹ op die diagram (geliasseer as Plan 9868) van Erf 2520, Simonstad; daarvandaan suidwaarts in 'n reguit lyn tot by Baken M op die diagram van Erf 451, Simonstad; daarvandaan suidweswaarts in 'n reguit lyn tot by die oostelikste baken van Erf 2011, Simonstad; daarvandaan suidweswaarts met die suidoostelike grens van laasgenoemde eiendom langs, tot by die suidelikste baken daarvan; daarvandaan suidooswaarts in 'n reguit lyn tot by die noordelikste baken van Gedeelte 4 van Plaas 979, Kaap; daarvandaan suidooswaarts en met die grense van die volgende eiendomme langs sodat hulle by hierdie gebied ingesluit word: Genoemde Gedeelte 4 van Plaas 979, Kaap, Gedeelte 1 van Plaas 979, Kaap, Gedeelte 3 van Plaas 979, Kaap, genoemde Gedeelte 1 van Plaas 979, Kaap, Plaas 992, Kaap, Erf 697, Simonstad, en Erf 698, Simonstad, tot by die noordelikste baken van laasgenoemde erf; daarvandaan noordooswaarts in 'n reguit lyn tot by Baken E3 op die diagram van Erf 420, Simonstad; daarvandaan suidooswaarts in reguit lyn deur Bakens F3, G3 en H3, tot by Baken A op die diagram van genoemde Erf 420, Simonstad; daarvandaan suidooswaarts met die suidwestelike grens langs van Erf 637, Simonstad, tot by Baken f op die diagram daarvan; daarvandaan suidooswaarts in 'n reguit lyn tot by die suidelikste baken van Erf 690, Simonstad; daarvandaan suidweswaarts met die grense van die volgende langs sodat hulle by hierdie gebied ingesluit word: Erf 691, Simonstad, Erf 701, Simonstad, genoemde Erf 691 en Erf 692, Simonstad, tot by die suidelikste baken van laasgenoemde erf; daarvandaan suidooswaarts met die grense van die volgende erwe langs sodat hulle van hierdie gebied uitgesluit word: Erf 699, Simonstad, Erf 702, Simonstad, Staatsgrond Erf 703, Simonstad, Erf 704, Simonstad, Erf 705, Simonstad, Erf 707, Simonstad, genoemde Staatsgrond Erf 703, Simonstad, Erf 795, Simonstad, Erf 824, Simonstad (die dorp Upper Mount Pleasant, Algemene Plan TP 1001) en Erf 694, Simonstad, tot by die suidelikste baken van laasgenoemde erf; daarvandaan suidooswaarts in 'n reguit lyn tot by Baken n¹ op die diagram (geliasseer as Plan 10040) van Erf 2577, Simonstad; daarvandaan suidooswaarts met die grens van genoemde Erf 2577, Simonstad, tot by Baken L¹ op die diagram daarvan; daarvandaan suidooswaarts in 'n reguit lyn tot by Baken I op die diagram van Erf 1063, Simonstad; daarvandaan suidooswaarts in 'n reguit lyn tot by Baken R op die diagram van Erf 1341, Simonstad; daarvandaan met grens R-Q langs, tot by Baken Q op die diagram van genoemde Erf 1341, Simonstad; daarvandaan suidooswaarts met die suidwestelike grense langs van Erwe 1315 en 1314 Simonstad, tot by die suidelikste baken van laasgenoemde erf; daarvandaan suidooswaarts in 'n reguit lyn tot by die westelikste baken

Simon's Town; thence north-westwards along the north-eastern boundary of said Erf 2440 Simon's Town, to the westernmost beacon thereof; thence south-eastwards in a straight line to the easternmost beacon of Portion 1 of Farm 963, Cape; thence south-eastwards along the boundaries of Farm 963, Cape, to the southernmost beacon thereof; thence north-westwards in a straight line to the easternmost beacon of Farm 972, Cape; thence south-westwards along the south-eastern boundary of the said Farm 972, Cape, to the southernmost beacon thereof; thence south-eastwards in a straight line to point L on the Surveyor-General's Office copy of the diagram of Farm 969, Cape; thence southwards and along the boundaries of the last-mentioned property to the easternmost beacon thereof; thence south-eastwards in a straight line to the beacon lettered d¹ on the diagram (filed as Plan 9868) of Erf 2520, Simon's Town; thence southwards in a straight line to the beacon lettered M on the diagram of Erf 451, Simon's Town; thence south-westwards in a straight line to the easternmost beacon of Erf 2011, Simon's Town; thence south-westwards along the south-eastern boundary of the last-mentioned property to the southernmost beacon thereof; thence south-eastwards in a straight line to the northernmost beacon of Portion 4 of Farm 979, Cape; thence south-eastwards and along the boundaries of the following properties, so as to include them in this area: the said Portion 4 of Farm 979, Cape, Portion 1 of Farm 979, Cape, Portion 3 of Farm 979, Cape, the said Portion 1 of Farm 979, Cape, Farm 992, Cape, Erf 697, Simon's Town and Erf 698, Simon's Town, to the northernmost beacon of the last-mentioned erf; thence north-eastwards in a straight line to Beacon E3 on the diagram of Erf 420, Simon's Town; thence south-eastwards, in straight lines through Beacons F3, G3 and H3 to Beacon A on the diagram of the said Erf 420, Simon's Town; thence south-eastwards along the south-western boundary of Erf 637, Simon's Town, to Beacon f on the diagram thereof; thence south-eastwards in a straight line to the southernmost beacon of Erf 690, Simon's Town; thence south-westwards along the boundaries of the following erven, so as to include them in this area: Erf 691, Simon's Town, Erf 701, Simon's Town, the said Erf 691 and Erf 692, Simon's Town, to the southernmost beacon of the last-mentioned erf; thence south-eastwards along the boundaries of the following erven, so as to exclude them from this area: Erf 699, Simon's Town, Erf 702, Simon's Town, State Land Erf 703, Simon's Town, Erf 704, Simon's Town, Erf 705, Simon's Town, Erf 707, Simon's Town, the said State Land Erf 703, Simon's Town, Erf 795, Simon's Town, Erf 824, Simon's Town (Upper Mount Pleasant Township, General Plan TP 1001) and Erf 694, Simon's Town, to the southernmost beacon of the last-mentioned erf; thence south-eastwards in a straight line to Beacon n¹ on the diagram (filed as Plan 10040) of Erf 2577, Simon's Town; thence south-eastwards along the boundary of the said Erf 2577, Simon's Town, to Beacon l¹ on the diagram thereof; thence south-eastwards, in a straight line, to Beacon I on the diagram of Erf 1063, Simon's Town; thence south-eastwards in a straight line to Beacon R on the diagram of Erf 1341, Simon's Town; thence along Boundary R-Q to Beacon Q on the diagram of the said Erf 1341, Simon's Town; thence south-eastwards along the south-western boundaries of Erven 1315 and 1314, Simon's Town, to the southernmost beacon of the latter erf; thence south-eastwards in a straight line to the westernmost beacon (Beacon a) of Erf 1553, Simon's Town; thence south-eastwards to Beacon r on the diagram of the said Erf 1553, Simon's Town; thence south-eastwards in a straight line to the westernmost beacon of Erf 1961, Simon's Town (as shown on General Plan TP 8262 of Froggy Farm Township); thence south-eastwards along the boundaries of the following erven of the last-mentioned township, so as to exclude them from this area: The said Erf

(Baken a) van Erf 1553, Simonstad; daarvandaan suidooswaarts tot by Baken r op die diagram van genoemde Erf 1553, Simonstad; daarvandaan suidooswaarts in 'n reguit lyn tot by die westelikste baken van Erf 1961, Simonstad (aangedui op Algemene Plan TP 8262 van die dorp Froggy Farm), daarvandaan suidooswaarts met die grense van die volgende erwe van laasgenoemde dorp langs sodat hulle van hierdie gebied uitgesluit word: Genoemde Erf 1961, Simonstad, Erwe 1962 tot 1968, oor die deurgang tussen Erwe 1968 en 1969 en met die grense langs van Erwe 1969 tot 1975, Simonstad, tot by die noordelikste baken van Erf 1614, Simonstad; daarvandaan suidooswaarts en met die grens van genoemde Erf 1614, Simonstad, langs tot by die suidwestelike baken daarvan; daarvandaan suidweswaarts in 'n reguit lyn tot by die suidelikste baken van Gedeelte 2 van die plaas Rocklands 1020, Kaap; daarvandaan suidooswaarts met die grens langs van die plaas Rocklands 1020, Kaap, tot by Baken m op die diagram daarvan; daarvandaan suidooswaarts in 'n reguit lyn tot by Baken j op genoemde diagram van die plaas Rocklands 1020, Kaap; daarvandaan noordooswaarts met die suidoostelike grens van genoemde plaas Rocklands 1020, Kaap, langs tot waar die verlenging van hierdie grens die laagwatermerk (Valsbaai) kruis; daarvandaan suidooswaarts, weswaarts en noordweswaarts met genoemde laagwatermerk van die see langs tot by die punt waar die verlenging, in 'n suidwestelike rigting, van die suidoostelike grens van Erf 765, Scarborough, genoemde laagwatermerk van die see kruis; daarvandaan noordooswaarts met genoemde verlenging en genoemde suidoostelike grens van Erf 765, Scarborough, langs, tot by die oostelikste baken van laasgenoemde erf; daarvandaan noordwaarts in 'n reguit lyn tot by Baken S op die diagram van Erf 762, Scarborough; daarvandaan in 'n reguit lyn tot by die oostelikste baken van Erf 761 [Scarborough-landgoed, Algemene Plan S 101^A (2067)]; daarvandaan noordweswaarts met die noordoostelike grense langs van genoemde Erf 761 en Erf 763, Scarborough (die dorp Scarborough-uitbreiding A, Algemene Plan TP 16), tot by die westelikste baken van laasgenoemde erf; daarvandaan suidooswaarts met die suidwestelike grens langs van genoemde Erf 763, Scarborough, tot by die punt waar die verlenging, in 'n suidoostelike rigting, van grens L-I op die diagram van genoemde Erf 763 die laagwatermerk van die Atlantiese Oseaan kruis; daarvandaan noordweswaarts met genoemde laagwatermerk van die Atlantiese Oseaan langs tot by die punt waar die verlenging, in 'n suidwestelike rigting, van grens EFF op die diagram van Gedeelte 2 van die plaas Medusa 977, Kaap, genoemde laagwatermerk van die Atlantiese Oseaan kruis; daarvandaan noordooswaarts met genoemde verlenging en grense van genoemde Gedeelte 2 van die plaas Medusa 977, Kaap, langs, sodat dit van hierdie gebied uitgesluit word, tot by die punt waar die verlenging van die noordwestelike grens daarvan genoemde laagwatermerk van die Atlantiese Oseaan kruis; daarvandaan noordweswaarts met genoemde laagwatermerk van die Atlantiese Oseaan langs tot by die punt waar die verlenging, in 'n noordwestelike rigting, van die noordoostelike grens van die plaas Medusa 977, Kaap, genoemde laagwatermerk van die Atlantiese Oseaan kruis; daarvandaan suidooswaarts met genoemde verlenging en noordoostelike grens van die Plaas Medusa 977, Kaap, langs tot by die noordelikste baken van Gedeelte 1 van Plaas 977, Kaap; daarvandaan noordwaarts en met die grens van Erf 3442, Kommetjie, langs, sodat dit by hierdie gebied ingesluit word, tot by die noordelikste baken daarvan; daarvandaan noordooswaarts in 'n reguit lyn tot by die suidoostelike baken van Erf 2967, Kommetjie; daarvandaan noordooswaarts in 'n reguit lyn tot by die westelikste baken van Erf 3547, Kommetjie; daarvandaan noordooswaarts met die noordwestelike grens langs van genoemde Erf 3547, Kommetjie, tot by die noordelikste baken daarvan; daarvandaan noordooswaarts

1961, Simon's Town, Erven 1962 to 1968, across the thoroughfare between Erven 1968 and 1969, and along the boundaries of Erven 1969 to 1975, Simon's Town, to the northernmost beacon of Erf 1614, Simon's Town; thence south-eastwards and along the boundary of the said Erf 1614, Simon's Town, to the south-western beacon thereof; thence south-westwards in a straight line to the southernmost beacon of Portion 2 of the farm Rocklands 1020, Cape; thence south-eastwards along the boundary of the farm Rocklands 1020, Cape, to Beacon m on the diagram thereof; thence south-eastwards in a straight line to Beacon j on the said diagram of the farm Rocklands 1020, Cape; thence north-eastwards along the south-eastern boundary of the said farm Rocklands 1020, Cape, to where the prolongation of this boundary intersects the low-water mark (False Bay); thence south-eastwards, westwards and north-westwards along the said low-water mark of the sea to the point where the prolongation, in a south-western direction, of the south-eastern boundary of Erf 765, Scarborough, intersects the said low-water mark of the sea; thence north-eastwards along the said prolongation and said south-eastern boundary of Erf 765, Scarborough, to the easternmost beacon of the said erf; thence north-eastwards in a straight line to Beacon S on the diagram of Erf 762, Scarborough; thence in a straight line to the easternmost beacon of Erf 761 [Scarborough Estate, General Plan S 101^A (2067)]; thence north-westwards along the north-eastern boundaries of the said Erf 761 and Erf 763, Scarborough (Scarborough Township Extension A, General Plan TP 16) to the westernmost beacon of the latter erf; thence south-eastwards along the south-western boundary of the said Erf 763, Scarborough, to the point where the prolongation, in a south-eastern direction, of Boundary L-I on the diagram of the said Erf 763 intersects the low-water mark of the Atlantic Ocean; thence north-westwards along the said low-water mark of the Atlantic Ocean to the point where the prolongation, in a south-westerly direction, of boundary EFF on the diagram of Portion 2 of the farm Medusa 977, Cape, intersects the said low-water mark of the Atlantic Ocean; thence north-eastwards along the said prolongation and boundaries of the said Portion 2 of the farm Medusa 977, Cape, so as to exclude it from this area, to the point where the prolongation of the north-western boundary thereof intersects the said low-water mark of the Atlantic Ocean; thence north-westwards along the said low-water mark of the Atlantic Ocean to the point where the prolongation, in a north-westerly direction, of the north-eastern boundary of the farm Medusa 977, Cape, intersects the said low-water mark of the Atlantic Ocean; thence south-eastwards along the said prolongation and north-eastern boundary of the farm Medusa 977, Cape, to the northernmost beacon of Portion 1 of Farm 977, Cape; thence northwards and along the boundary of Erf 3442, Kommetjie, so as to include it in this area, to the northernmost beacon thereof; thence north-eastwards in a straight line to the south-eastern beacon of Erf 2967, Kommetjie; thence north-eastwards in a straight line to the westernmost beacon of Erf 3547, Kommetjie; thence north-eastwards along the north-western boundary of the said Erf 3547, Kommetjie, to the northernmost beacon thereof; thence north-eastwards in a straight line to the south-western beacon of Erf 3548, Kommetjie; thence eastwards along the boundaries of the said Erf 3548 and Erf 2992, Kommetjie, so as to exclude them from this area, to the south-eastern beacon of the latter erf; thence eastwards in a

in 'n reguit lyn tot by die suidwestelike baken van Erf 3548, Kommetjie; daarvandaan ooswaarts met die grense langs van genoemde Erf 3548 en Erf 2992, Kommetjie, sodat hulle van hierdie gebied uitgesluit word, tot by die suidoostelike baken van laasgenoemde erf; daarvandaan ooswaarts in 'n reguit lyn tot by die suidelikste baken van Erf 3440, Kommetjie; daarvandaan noordooswaarts met die suidoostelike grense langs van genoemde Erf 3440 en Erwe 3546, 3545, 3544 en 3543, Kommetjie, sodat hulle van hierdie gebied uitgesluit word, tot by die noordoostelike baken van Erf 3543, Kommetjie; daarvandaan suidooswaarts met die suidelike grens langs van Gedeelte 13 van Plaas 948, Kaap, sodat dit van hierdie gebied uitgesluit word, tot by Bakens z op die diagram van Erf 682, Ocean View (die dorp Slangkop, Algemene Plan TP 8065), die beginpunt.

Die volgende word uitgesluit van die gebied beskryf in 2 hierbo:

Die dorp Scarborough, voorgestel op die diagram van Erf 754, Scarborough, met inbegrip van Erwe 228, 251, 255, 257, 476, 547, 608, 610, 616, 622 en 659, Scarborough, en ook Erwe 766 en 769, Scarborough.

Voetnotas

(1) Die koördinate van punte 1-4 hierbo, gegrond op Gauss se Konforme Stelsel Lo 19°, is soos volg:

Punt	Y (+0,0 m)	X (+3 700 000 m)	CCC 1/1000-vel	LG- noteringsvel
1	55828,5	54217,0	5554A	963
2	55794,5	54093,0	5554A	961
3	55769,0	54051,0	5554A	961
4	55634,5	53926,0	5553B	961

Hierdie koördinate en planne is geliasseer as Opmetingsrekords E 1755/1981 in die Kantoor van die Landmeter-generaal, Kaapstad.

(2) Die koördinate van bogenoemde punte, gegrond op die Gauss Konforme Stelsel Lo 19°, is soos volg:

Punte	Stelsel Lo 19° Meter	
	Y	X
<i>Konstante</i>	+0,0	+3 700 000,0
1	49449,5	58304,0
2	49436,0	58315,0
3	49405,0	58314,0
4	49393,5	58298,0
5	49352,5	58207,5
6	49352,0	58199,5
7	49352,0	58195,0
8	49338,0	58174,5
9	49324,0	58006,5
10	49260,0	57991,0
11	49255,0	57922,0
12	49227,0	57905,0
13	49224,5	57884,0
14	49222,0	57859,5
15	49223,0	57634,0
16	49266,0	57401,5
17	49353,5	57358,0
18	49372,5	57319,5
19	49397,5	57256,0
20	49470,0	57231,5
21	49549,5	57232,5
22	49559,5	57223,5
23	49607,5	57226,0
24	49673,5	57246,0
25	49828,0	57247,5
26	49859,0	57235,0
27	49907,0	57222,5
28	49939,0	57218,0
29	49950,5	57189,5
30	49984,5	57123,5
31	50049,0	57085,0
32	50092,0	57000,0
33	50097,5	56963,5
34	50121,5	

straight line to the southernmost beacon of Erf 3440, Kommetjie; thence north-eastwards along the south-eastern boundaries of the said Erf 3440 and Erven 3546, 3545, 3544 and 3543, Kommetjie, so as to exclude them from this area, to the north-eastern beacon of Erf 3543, Kommetjie; thence south-eastwards along the southern boundary of Portion 13 of Farm 948, Cape, so as to exclude it from this area, to Beacon z on the diagram of Erf 682, Ocean View (Slangkop Township, General Plan TP 8065), the point of beginning.

The following is excluded from the area described in 2 above:

The Township of Scarborough as represented on the diagram of Erf 754, Scarborough, inclusive of Erven 228, 251, 255, 257, 476, 547, 608, 610, 616, 622 and 659, Scarborough, and also Erven 766 and 769, Scarborough.

Foot notes

(1) The co-ordinates of points 1-4 above, based on the Gauss Conform System Lo 19°, are as follows:

Point	Y (+0,0 m)	X (+3 700 000 m)	CCC 1/1000 Sheet	SG Noting Sheet
1	55828,5	54217,0	5554A	963
2	55794,5	54093,0	5554A	961
3	55769,0	54051,0	5554A	961
4	55634,5	53926,0	5553B	961

These co-ordinates and plans are filed as Survey Records E 1755/1981 in the Surveyor-General's Office, Cape Town.

(2) The co-ordinates of the above-mentioned points, based on the Gauss Conform System Lo 19°, are as follows:

Points	System Lo 19° Metres	
	Y	X
<i>Constant</i>	+0,0	+3 700 000,0
1	49449,5	58394,0
2	49436,0	58315,0
3	49405,0	58314,0
4	49393,5	58298,0
5	49352,5	58207,5
6	49353,0	58199,5
7	49352,0	58195,0
8	49338,0	58174,5
9	49324,0	58006,5
10	49260,0	57991,0
11	49255,0	57922,0
12	49227,0	57905,0
13	49224,5	57884,0
14	49222,0	57859,5
15	49223,0	57634,0
16	49266,0	57401,5
17	49353,5	57358,0
18	49372,5	57319,5
19	49397,5	57256,0
20	49470,0	57231,5
21	49549,5	57232,5
22	49559,5	57223,5
23	49607,5	57226,0
24	49673,5	57246,0
25	49828,0	57247,5
26	49859,0	57235,0
27	49907,0	57222,5
28	49939,0	57218,0
29	49950,5	57189,5
30	49984,5	57123,5
31	50049,0	57085,0
32	50092,0	57000,0
33	50097,5	56963,5
34	50121,5	

Punte	Stelsel Lo 19° Meter	
	Y	X
<i>Konstante</i>	+0,0	+3 700 000,0
35	50153,0	56939,5
36	50231,5	56900,0
37	50236,5	56899,0
54	50846,0	56912,0
55	50881,0	56899,5
56	50912,5	56876,5
61	51032,5	56757,0
65	51161,0	56706,0
69	51293,5	56663,0

Die lys koördinate en betrokke planne is geliasseer as Opmetingsrekords E 1757/1981 by die Kantoor van die Landmeter-generaal, Kaapstad.

(3) Die koördinate van bogenoemde koördinaatpunte, gegrond op die Gauss Konforme Stelsel Lo 19°, is soos volg:

Punte	Stelsel Lo 19° Meter	
	Y	X
<i>Konstante</i>	+0,0 m	+3 700 000,0 m
A	50978,0	60579,0
B	50940,5	60515,0
C	50701,5	60278,5
D	50360,0	59980,5
E	50108,5	59715,5
F	50025,5	59645,0
G	49878,0	59368,0
H	49820,5	59159,5

Die lys koördinate en betrokke planne is geliasseer as Opmetingsrekords E 1757/1981, by die Kantoor van die Landmeter-generaal, Kaapstad.

(4) Die koördinate van punte 1 tot 16 hierbo, gegrond op die Gauss Konforme Stelsel Lo 19°, is soos volg:

Punte	Y (+0,0 m)	X (+3 700 000 m)	LG-noterings- vel
1	49269,1	75456,2	128
2	49282,3	75585,6	128
3	49283,0	75709,0	128
4	49377,1	75872,4	128
5	49463,1	75968,8	128
6	49537,4	76092,2	5911
7	49657,7	76203,4	5910
8	49794,3	76304,4	5910
9	49893,2	76329,0	5910
10	50024,2	76481,7	5910
11	50277,0	76657,1	5910
12	50414,3	76864,9	5913
13	50572,0	76990,5	5913
14	50637,2	77165,3	5913
15	50743,6	77222,6	5912
16	50919,0	77389,5	6277

BYLAE B

GEBIED A

Minerale Gebied 1 oor die Restant van Plaas 932, soos voorgestel deur Kaart 1639/1979 RM, geleë te Noordhoek, administratiewe distrik van die Kaap.

GEBIED B

Begin by Baken AX' in Meetstuk E1141/83; daarvan suidooswaarts in 'n reek reguit lyne deur Bakens BX, CX', DX', EX', FX en GXP, almal in genoemde meetstuk; daarvandaan noordooswaarts in 'n reguit lyn tot by genoemde Baken AX', die beginpunt.

Points	System Lo 19° Metres	
	Y	X
<i>Constant</i>	+0,0	+3 700 000,0
35	50153,0	56939,5
36	50231,5	56900,0
37	50236,5	56899,0
54	50846,0	56912,0
55	50881,0	56899,5
56	50912,5	56876,5
61	51032,5	56757,0
65	51161,0	56706,0
69	51293,5	56663,0

The list of co-ordinates and relevant plans are filed as Survey Records E 1757/1981, in the Surveyor-General's Office, Cape Town.

(3) The co-ordinate of the above-mentioned co-ordinated points based on the Gauss Conform System Lo 19°, are as follows:

Points	System Lo 19° Metres	
	Y	X
<i>Constant</i>	+0,0 m	+3 700 000,0 m
A	50978,0	60579,0
B	50940,5	60515,0
C	50701,5	60278,5
D	50360,0	59980,5
E	50108,5	59715,5
F	50025,5	59645,0
G	49878,0	59368,0
H	49820,5	59159,5

The list of co-ordinates and relevant plans are filed as Survey Records E 1757/1981, in the Surveyor-General's Office, Cape Town.

(4) The co-ordinates of points 1 to 16 above, based on the Gauss Conform System Lo 19°, are as follows:

Points	Y (+0,0 m)	X (+3 700 000 m)	SG Noting Sheet
1	49269,1	75456,2	128
2	49282,3	75585,6	128
3	49283,0	75709,0	128
4	49377,1	75872,4	128
5	49463,1	75968,8	128
6	49537,4	76092,2	5911
7	49657,7	76203,4	5910
8	49794,3	76304,4	5910
9	49893,2	76329,0	5910
10	50024,2	76481,7	5910
11	50277,0	76657,1	5910
12	50414,3	76864,9	5913
13	50572,0	76990,5	5913
14	50637,2	77165,3	5913
15	50743,6	77222,6	5912
16	50919,0	77389,5	6277

SCHEDULE B

AREA A

Mineral Area 1 over the Remainder of Farm 932 as represented by Diagram 1639/1979 RM situate at Noordhoek, Administrative District of the Cape.

AREA B

Beginning at Beacon AX' in Survey Records E 1141/83; thence south-eastwards in a series of straight lines through Beacons BX, CX', DX', EX', FX and GXP, all in the said survey records, thence north-eastwards in a straight line to the said Beacon AX', the point of beginning.

GEBIED C

Begin by die noordelikste baken van die dorp Slangkop (T.P. 8065); daarvandaan noordooswaarts met die suidoostelike grense van Gedeeltes 12 en 14 van die plaas Kommetjie Estate 948, administratiewe distrik van die Kaap, tot by Baken A in Meetstuk E 1141/83; daarvandaan suidwaarts in 'n reeks reguit lyne deur bakens Line 2 en NCX1, almal in genoemde meetstuk; daarvandaan noordweswaarts in 'n reguit lyn tot by genoemde noordelikste baken van die dorp Slangkop, die beginpunt.

AREA C

Beginning at the northernmost beacon of Slangkop Township (T.P. 8065); thence north-eastwards along the south-eastern boundaries of Portions 12 and 14 of the farm Kommetjie Estate 948, Administrative District of the Cape, to Beacon A in Survey Records E 1141/83; thence southwards in a series of straight lines through beacons Line 2 and NCX1, all in the said survey records; thence northwards in a straight line to the northernmost beacon of Slangkop Township, the point of beginning.

30 June 1989

The Province of the Cape of Good Hope Official Gazette

4592

2227

No. 52/1989

30 June 1989

CAPE PENINSULA NATURE AREA:**ALTERATION OF BOUNDARY**

Under and by virtue of the powers vested in me by section 10 of the Physical Planning Act, 1967 (Act 88 of 1967), read with State President's Minute No. 1044 dated 20 October 1986, I, Eugene Louw, Administrator of the Province of the Cape of Good Hope, hereby alter the boundary of the Cape Peninsula Nature Area as defined in Schedule A of Government Notice No. 171 which appeared in the Government Gazette of 10 February 1984, by excluding Erven 15033, 15034 and 15035, Fish Hoek, in their entirety, from the Cape Peninsula Nature Area, with effect from the date of this notice.

Signed at Cape Town this 21st day of June 1989.

E. LOUW, ADMINISTRATOR

No. 52/1989

30 Junie 1989

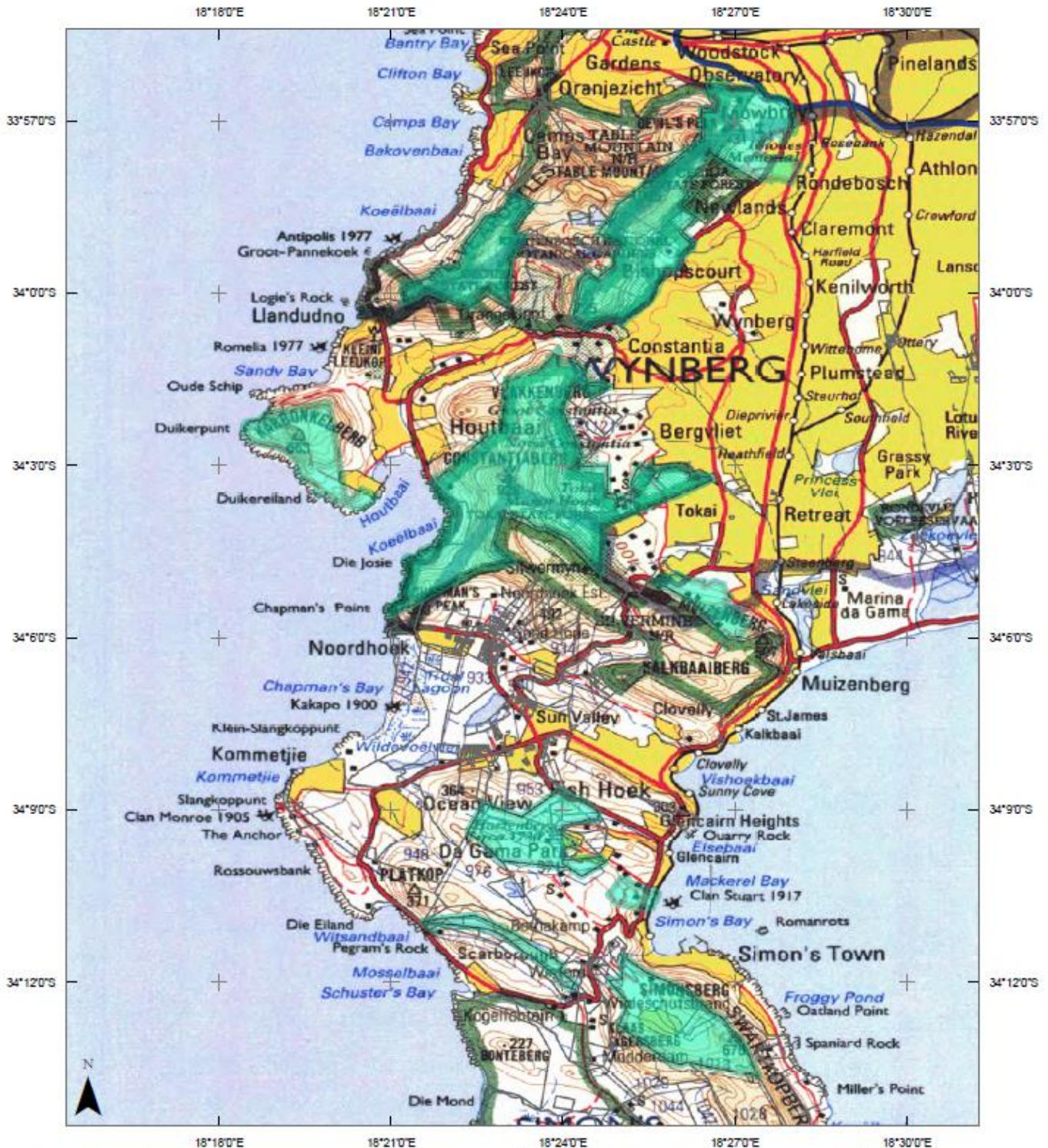
KAAPSE SKIEREILAND-NATUURGEBIED:**VERANDERING VAN GRENS**

Kragtens die bevoegdheid my verleen by artikel 10 van die Wet op Fisiese Beplanning, 1967 (Wet 88 van 1967), saamgelees met Staatspresidentsminute No. 1044 van 20 Oktober 1986, verander ek, Eugene Louw, Administrateur van die Provinsie die Kaap die Goeie Hoop, hierby met ingang van die datum van hierdie kennisgewing, die grense van die Kaapse Skiereiland-natuurgebied soos omskryf in Bylae A van Goewermentskennisgewing No. 171 wat in die Staatskoerant van 10 Februarie 1984 verskyn het, deur Erve 15033, 15034 en 15035, Vishoek, in hul geheel, uit die Kaapse Skiereiland-natuurgebied uit te sluit.

Geteken te Kaapstad op hede die 21ste dag van Junie 1989.

E. LOUW, ADMINISTRATEUR

CAPE PENINSULA NATURE AREA



GENERAL INFORMATION

Name: Cape Peninsula Nature Area
 Province: Western Cape
 Magisterial District: Simons Town/Wynberg/Cape
 Designation: Local nature reserve
 Intl. Convention: World Heritage Convention Act, 1999(Act 49 of 1999)
 Management Agency: South African National Parks Board
 Owner Name: 80%+ City of Cape Town
 Ownership Type: Mainly Local Government
 Map Background: 1 : 50 000 Topographical Map Series
 Boundary Source: National Department of Environmental Affairs (2009)

PROCLAMATION STATUS

Legal Status: Legally Declared (Designated)
 Description Status: Text description
 Legal Boundary: **Not Verified**
 Date of Establishment: 1984/02/10
 Documented Total Area (ha):
 GIS Total Area (ha): 6297.7
 Centre Lat/Long: 34.0609 S 18.40177 E
 Decree Number: Government Notice No. 171
 Act: Section 10 of the Physical Planning Act, 1967 (Act 88 of 1967)

AMENDMENTS

Date	Decree Number
1989/06/30	G.N. 52

