

NATURE RESERVE

Gazetted Name: Anysberg Provincial NR

Action as Gazetted	Gazette no.	Notice no. & date	Page no.
Establishment of the Anysberg Provincial Nature Reserve	no: 4656	notice: 51 date: 17 August 1990	4020
Alteration of boundaries	no: 5095	notice: 57 date: 29 November 1996	2
Extension of the boundaries of the Anysberg Provincial Nature Reserve.	no: 6477	notice: 16 date: 9 November 2007	1558
Declaration of Areas as part of the existing Anysberg Provincial Nature Reserve	No: 8488	Notice: 104 Date: 10 September 2021	8, 11 – 15, 17

No. 51/1990

NATURE AND ENVIRONMENTAL CONSERVATION ORDINANCE, 1974 (ORDINANCE 19 OF 1974):

ESTABLISHMENT OF A PROVINCIAL NATURE RESERVE

In terms of section 6(1) of the Nature and Environmental Conservation Ordinance, 1974 (Ordinance 19 of 1974), I hereby establish a provincial nature reserve on the properties Remainder of Portion 1, Portion 2, Portion 3 (Goede Hoop) and Portion 4 (Vrede) of the farm De Vlakte No. 263, Portion 1 (De Naald) and the Remainder of the farm Tap Fontein No. 260, Portion 1 (Prins Poort) and the Remainder of the farm Anysberg-East No. 261, Portion 1 and the Remainder of the farm Anysberg-West No. 262, Portion 1, Remainder of Portion 2, Portion 3 (portion of Portion 2) and Portion 4 (portion of Portion 2) of the farm Kleynspreeuwfontein No. 177, Portion 3 of the farm Witte Poort No. 259, Portion 2 of the farm Annex Ezels Fontein No. 141, die Remainder of the farm Keurkloof No. 265, the farm Keurkloof No. 167, the farm Matjes Kloof No. 175 and the farm Vyvers Hoek No. 176 in the Sentrale Karoo Region, the boundaries of which are as indicated on a diagram filed in the office of the Chief Director: Nature and Environmental Conservation, Utilitas Building, 1 Dorp Street, Cape Town, and I hereby assign the name "Anysberg Provincial Nature Reserve" to it.

Dated at Cape Town this 6th day of August 1990.

J. W. H. MEIRING, ADMINISTRATOR

No. 51/1990

**ORDONNANSIE OP NATUUR- EN OMGEWINGSBEWARING,
1974 (ORDONNANSIE 19 VAN 1974):**

STIGTING VAN 'N PROVINSIALE NATUURRESERVAAT

Kragtens artikel 6(1) van die Ordonnansie op Natuur- en Omgewingsbewing, 1974 (Ordonnansie 19 van 1974), stig ek hierby 'n provinsiale natuurreservaat op die eiendomme Restant van Gedeelte 1, Gedeelte 2, Gedeelte 3 (Goede Hoop) en Gedeelte 4 (Vrede) van die plaas De Vlake no. 263, Gedeelte 1 (De Naald) en die Restant van die plaas Tap Fontein no. 260, Gedeelte 1 (Prins Poort) en die Restant van die plaas Anysberg-East no. 261, Gedeelte 1 en die Restant van die plaas Anysberg-West no. 262, Gedeelte 1, Restant van Gedeelte 2, Gedeelte 3 (gedeelte van Gedeelte 2) en Gedeelte 4 (gedeelte van Gedeelte 2) van die plaas Kleynspreuwfontein no. 177, Gedeelte 3 van die plaas Witte Poort no. 259, Gedeelte 2 van die plaas Annex Ezels Fontein no. 141, die Restant van die plaas Keurkloof no. 265, die plaas Keurkloof no. 167, die plaas Matjes Kloof no. 175 en die plaas Vyvers Hoek no. 176 in die Sentrale Karoo Streek, die grense waarvan is soos aangedui op 'n diagram geliasseer in die kantoor van die Hoofdirekteur: Natuur- en Omgewingsbewing, Utilitasgebou, Dorpstraat 1, Kaapstad, en ken ek hierby die naam "Anysberg Provinsiale Natuurreservaat", daaraan toe.

Gedateer te Kaapstad op hede die 6de dag van Augustus 1990.

J. W. H. MEIRING, ADMINISTRATEUR

No. 51/1990

NATURE AND ENVIRONMENTAL CONSERVATION ORDINANCE, 1974 (ORDINANCE 19 OF 1974):

ESTABLISHMENT OF A PROVINCIAL NATURE RESERVE

In terms of section 6(1) of the Nature and Environmental Conservation Ordinance, 1974 (Ordinance 19 of 1974), I hereby establish a provincial nature reserve on the properties Remainder of Portion 1, Portion 2, Portion 3 (Goede Hoop) and Portion 4 (Vrede) of the farm De Vlake No. 263, Portion 1 (De Naald) and the Remainder of the farm Tap Fontein No. 260, Portion 1 (Prins Poort) and the Remainder of the farm Anysberg-East No. 261, Portion 1 and the Remainder of the farm Anysberg-West No. 262, Portion 1, Remainder of Portion 2, Portion 3 (portion of Portion 2) and Portion 4 (portion of Portion 2) of the farm Kleynspreuwfontein No. 177, Portion 3 of the farm Witte Poort No. 259, Portion 2 of the farm Annex Ezels Fontein No. 141, die Remainder of the farm Keurkloof No. 265, the farm Keurkloof No. 167, the farm Matjes Kloof No. 175 and the farm Vyvers Hoek No. 176 in the Sentrale Karoo Region, the boundaries of which are as indicated on a diagram filed in the office of the Chief Director: Nature and Environmental Conservation, Utilitas Building, 1 Dorp Street, Cape Town, and I hereby assign the name "Anysberg Provincial Nature Reserve" to it.

Dated at Cape Town this 6th day of August 1990.

J. W. H. MEIRING, ADMINISTRATOR

2

Provinsie Wes-Kaap: Provinsiale Koerant 5095

29 November 1996

PROKLAMASIES



PROVINSIALE REGERING: WES-KAAP

NO 57/1996

**ORDONNANSIE OP NATUUR- EN OMGEWINGSBEWARING, 1974
(ORDONNANSIE 19 VAN 1974)**

**LAINGSBURG:
ANYSBERG PROVINSIALE NATUURRESERVAAT:**

**WYSIGING VAN DIE GRENSE: REGSTELLINGSKENNISGEWING
VAN PROKLAMASIE NO. 51/1990**

Kragtens artikel 6(1)(b) van die Ordonnansie op Natuur- en Omgewingsbewing, 1974 (Ordonnansie 19 van 1974), wysig ek hierby die grense van die Anysberg Provinsiale Natuurreservaat soos omskryf in Proklamasie No. 51/1990 van 6 Augustus 1990, deur die toevoeging van die plaas Drie Hoek No. 264, Laingsburg tot genoemde grensomskrywing.

Geteken te Kaapstad op hede die 7de dag van Oktober 1996.

**J. W. H. MEIRING, MINISTER VAN FINANSIES EN OMGEWINGS-
SAKE**

PROCLAMATIONS

PROVINCIAL GOVERNMENT: WESTERN CAPE

NO 57/1996

**NATURE AND ENVIRONMENTAL CONSERVATION ORDINANCE, 1974
(ORDINANCE 19 OF 1974)**

**LAINGSBURG:
ANYSBERG PROVINCIAL NATURE RESERVE:**

**ALTERATION OF THE BOUNDARIES: RECTIFICATION
OF PROCLAMATION NO. 51/1990**

In terms of section 6(1)(b) of the Nature and Environmental Conservation Ordinance, 1974 (Ordinance 19 of 1974), I hereby amend the boundaries of the Anysberg Provincial Reserve as defined in Proclamation No. 51/1990 dated 6 August 1990 by the addition of the farm Drie Hoek No. 264, Laingsburg to the mentioned description of the boundaries.

Signed at Cape Town this 7th day of October 1996.

**J. W. H. MEIRING, MINISTER OF FINANCE AND ENVIRONMENTAL
AFFAIRS**

PROCLAMATION

PROVINCE OF WESTERN CAPE

NO. 16/2007

NATURE CONSERVATION ORDINANCE, 1974 (ORDINANCE 19 OF 1974)

EXTENSION OF THE BOUNDARIES OF A PROVINCIAL NATURE RESERVE: "ANYSBERG PROVINCIAL NATURE RESERVE"

In terms of section 6(1)(b) of the Nature Conservation Ordinance, 1974 (Ordinance 19 of 1974), I hereby redefine the boundaries of the Anysberg Provincial Nature Reserve by the inclusion of Remainder of the Farm Touwsfontein No. 1, Remainder of Portion 1 of the Farm Touwsfontein No. 1, Portion 2 (Portion of Portion 1) of the Farm Touwsfontein No. 1, the Farm "Kookers Kloof" No. 3, Portion 1 of the Farm Klipgat No. 4, Portion 2 of the Farm Klipgat No. 4, Portion 3 of the Farm Klipgat No. 6, Remainder of the Farm Klipgat No. 5, Portion 4 of the Farm Touwsfontein No. 1, Annex Touwsfontein No. 2, Portion 3 (Valletjies siding) of the Farm Touwsfontein No. 1, Ladismith. The Farm Groot Vlakte No. 22, the Farm Groot Vlakte No. 23, Remaining extent of the Farm Kruis Rivier No. 20, Remainder of Portion 1 of the Farm Kruis Rivier No. 20, Remaining extent of the Farm Allemorgens Fontein No. 21, Remainder of Portion 2 of the Farm Allemorgens Fontein No. 21, the Farm Spitskop No. 24, Montagu. Remaining extent of the Farm Riet Kloof No. 173, Portion 2 of the Farm Riet Kloof No. 173, Portion 1 of the Farm Keurkloof No. 265, Laingsburg, 28 406.8373 ha in extent, the boundaries of which are as indicated on a map filed in the office of the Acting Chief Executive Officer: Western Cape Nature Conservation Board, CapeNature House, Belmont Office Park, 14 Belmont Road, Rondebosch.

Signed at Cape Town this 20th day of October 2007.

T ESSOP,

MINISTER OF ENVIRONMENTAL AFFAIRS, PLANNING AND ECONOMIC DEVELOPMENT

PROVINCIAL NOTICE

P.N. 104/2021

10 September 2021

DEPARTMENT OF ENVIRONMENTAL AFFAIRS AND DEVELOPMENT PLANNING**NATIONAL ENVIRONMENTAL MANAGEMENT: PROTECTED AREAS ACT, 2003 (ACT 57 OF 2003)****DECLARATION OF AREAS AS PART OF THE EXISTING ANYSBERG PROVINCIAL NATURE RESERVE**

I, Anton Wilhelm Bredell, Provincial Minister of Local Government, Environmental Affairs and Development Planning in the Western Cape, under section 23(1)(a)(ii) of the National Environmental Management: Protected Areas Act, 2003 (Act 57 of 2003), declare the following areas, indicated on the map and of which the boundaries are reflected on Surveyor-General Diagrams Nos. 1805/1884, 622/1909, 308/1876, 499/1894, 621/1909, 3153/1884 and 2028/1995, as set out in the Schedule, part of the existing Anysberg Provincial Nature Reserve:

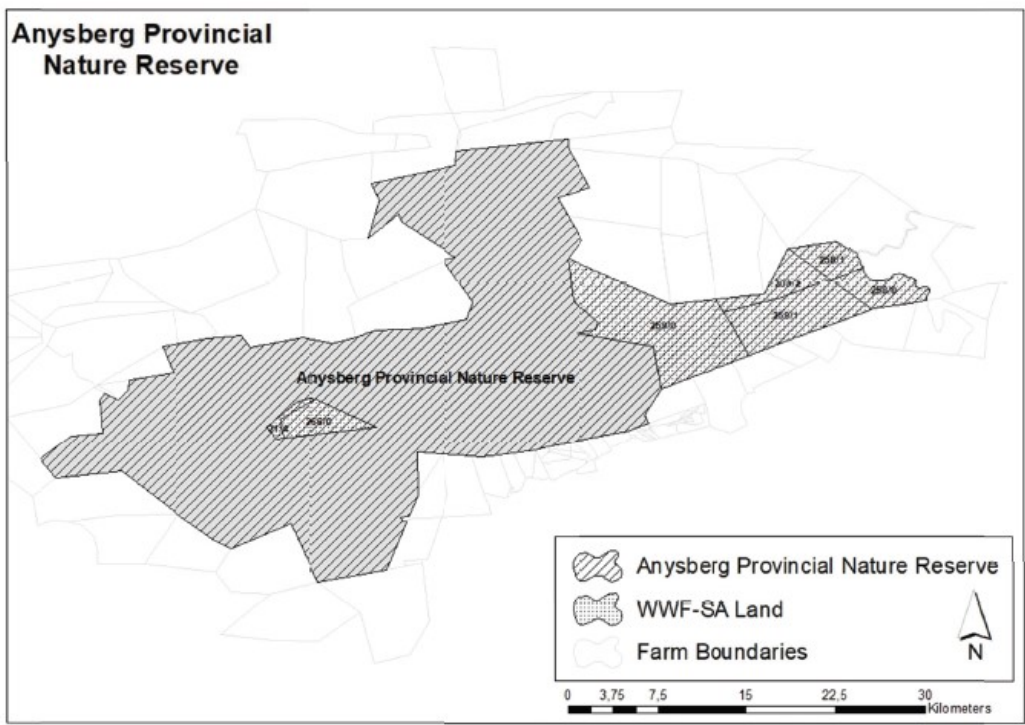
- Remainder of the Farm Wilger Fontein No. 258, situated in the Laingsburg Municipality, Division of Laingsburg, Western Cape Province;
In extent: 1298, 7880 (One Thousand Two Hundred and Ninety-Eight comma Seven Eight Eight Zero) hectares;
Held by Deed of Transfer No. T31903/2012;
- Portion 1 of the Farm Wilger Fontein No. 258, situated in the Laingsburg Municipality, Division of Laingsburg, Western Cape Province;
In extent: 926, 4821 (Nine Hundred and Twenty-Six comma Four Eight Two One) hectares;
Held by Deed of Transfer No. T31903/2012;
- Remainder of the Farm Witte Poort No. 259, situated in the Laingsburg Municipality, Division of Laingsburg, Western Cape Province;
In extent: 6203, 9726 (Six Thousand Two Hundred and Three comma Nine Seven Two Six) hectares;
Held by Deed of Transfer No. T31903/2012;
- Remainder of Portion 1 of the Farm Witte Poort No. 259, situated in the Laingsburg Municipality, Division of Laingsburg, Western Cape Province;
In extent: 3175, 2726 (Three Thousand One Hundred and Seventy-Five comma Two Seven Two Six) hectares;
Held by Deed of Transfer No. T31903/2012;
- Portion 2 (Portion of Portion 1) of the Farm Witte Poort No. 259, situated in the Laingsburg Municipality, Division of Laingsburg, Western Cape Province;
In extent: 1227, 1020 (One Thousand Two Hundred and Twenty-Seven comma One Zero Two Zero) hectares;
Held by Deed of Transfer No. T31903/2012;
- The Farm Annex Allemorgens Fontein No. 266, situated in the Laingsburg Municipality, Division of Laingsburg, Western Cape Province;
In extent: 1151, 1491 (One Thousand One Hundred and Fifty-One comma One Four Nine One) hectares;
Held by Deed of Transfer No. T61161/2012; and
- Portion 4 of the Farm Allemorgens Fontein No. 21, situated in the Langeberg Municipality, Division of Montagu, Western Cape Province;
In extent: 233, 8504 (Two Hundred and Thirty-Three comma Eight Five Zero Four) hectares;
Held by Deed of Transfer No. T61161/2012.

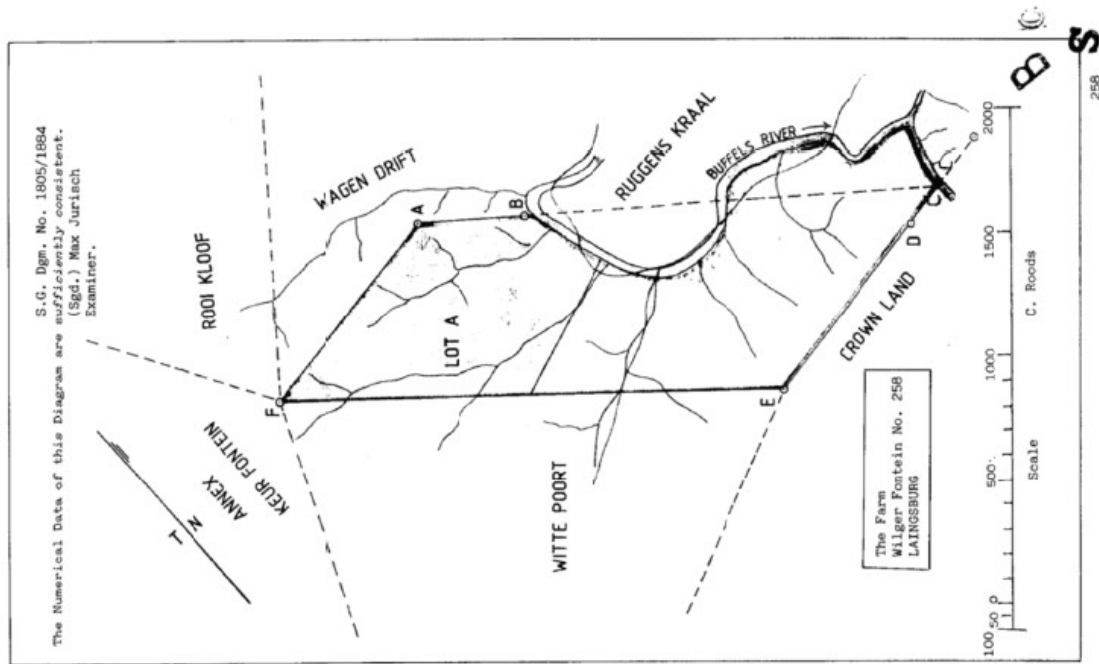
Signed at Cape Town on this 3rd day of August 2021.

AW BREDELL

PROVINCIAL MINISTER OF LOCAL GOVERNMENT, ENVIRONMENTAL AFFAIRS AND DEVELOPMENT PLANNING

SCHEDULE/BYLAE/ISHEDYULI





SIDES	ANGLES	CO-ORDINATES
C. Roods		
AB 463.43	A 134° 10' 50"	+ 3615.20
BC 1666.40	B 177° 31' 10"	+ 3541.00
CD 180.51	C 49° 30' 10"	+ 2497.75
DE 856.12	D 179° 35' 00"	+ 2464.10
EF 2063.49	E 128° 43' 10"	+ 2310.60
FA 917.69	F 50° 29' 40"	+ 3663.10
Rectl. Area = 2626 Morgen 401 Sq. Roods		
<div style="border: 1px solid black; padding: 5px; display: inline-block;"> The Farm Wilger Fontein No. 258 LAINGSBURG </div>		
The annexed Diagram, lettered AB River C'DEF, represents 2598 Morgen 0 Square Roods of CROWN LAND, called "WILGERFONTEIN" situate in the Field-cornetcy of		
Bounded:- NORTH by Wagen Drift, NORTH EAST " Wagen Drift & the Buffels River, SOUTH " Crown Land, SOUTH WEST " Witte Poort,		
Beacons pointed out to D.J. Burger. F.C.		
Surveyed by me, (Sgd.) Gert Greeff Government Land Surveyor		
1884	8/26/75/14 BJ-4 (3930)	
Copied from diagram relating to Worc. Q. 19-11 for Surveyor-General. Date: 1990.04.16		
FOR ENDORSEMENTS SEE BACK OF DIAGRAM		
EVZ		

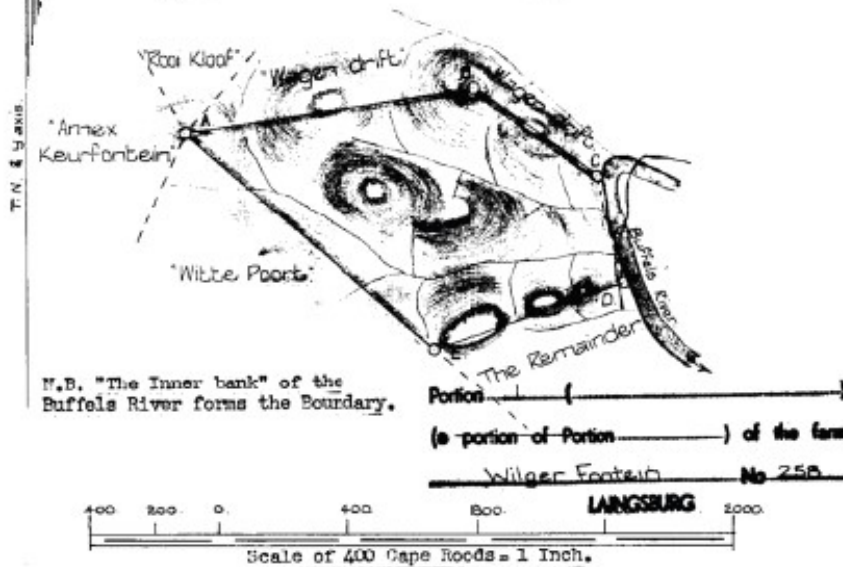
S. G. D. 622/1909

S.G. Dgn. No. 622/1909.

Deducted No. 914
 (Sgd.) W.P. Murray
 Registry Surveyor and Examiner.
 27th April, 1909.

SIDES.		C.R.		ANGLES.		CO-ORDINATES.	
AB	917	69	A	50	29	40	A + 3663 . 10 - 5855 . 30
BC	463	43	B	134	10	50	B + 3815 . 20 - 6760 . 30
CD	349	96	C	141	19	30	C + 3541 . 00 - 7133 . 90
DE	628	76	D	95	2	20	D + 3203 . 04 - 7224 . 75
EA	1031	38	E	118	57	40	E + 2987 . 10 - 6634 . 24

R. Area: A.B.C.D.E. 1077 Morgen 494 S.R.



The above diagram, lettered A B C & Inner bank of Buffels River D E represents 1081 Morgen 400 Square Roods of Land, situate in the Fieldcorner of "Klein Zwartberg" Division of Langsburg, being "Lot A" a part of the farm "Wilger Fontein" granted to J.J. Nel on the 29th July, 1885.

Bounded North by "Wagen Drift".
 North east " "Wagen Drift" & "The Inner bank of the Buffels River".
 South " "The Remainder".
 South West " "Witte Poort".

Surveyed and beaconed by me according to Regulations.

(Sgd.) Gert. Greeff.
 Govt. Land Surveyor.
 December, 1908.

Transfer — 9046

21st December, 1909

Jacobus. J. Nel.

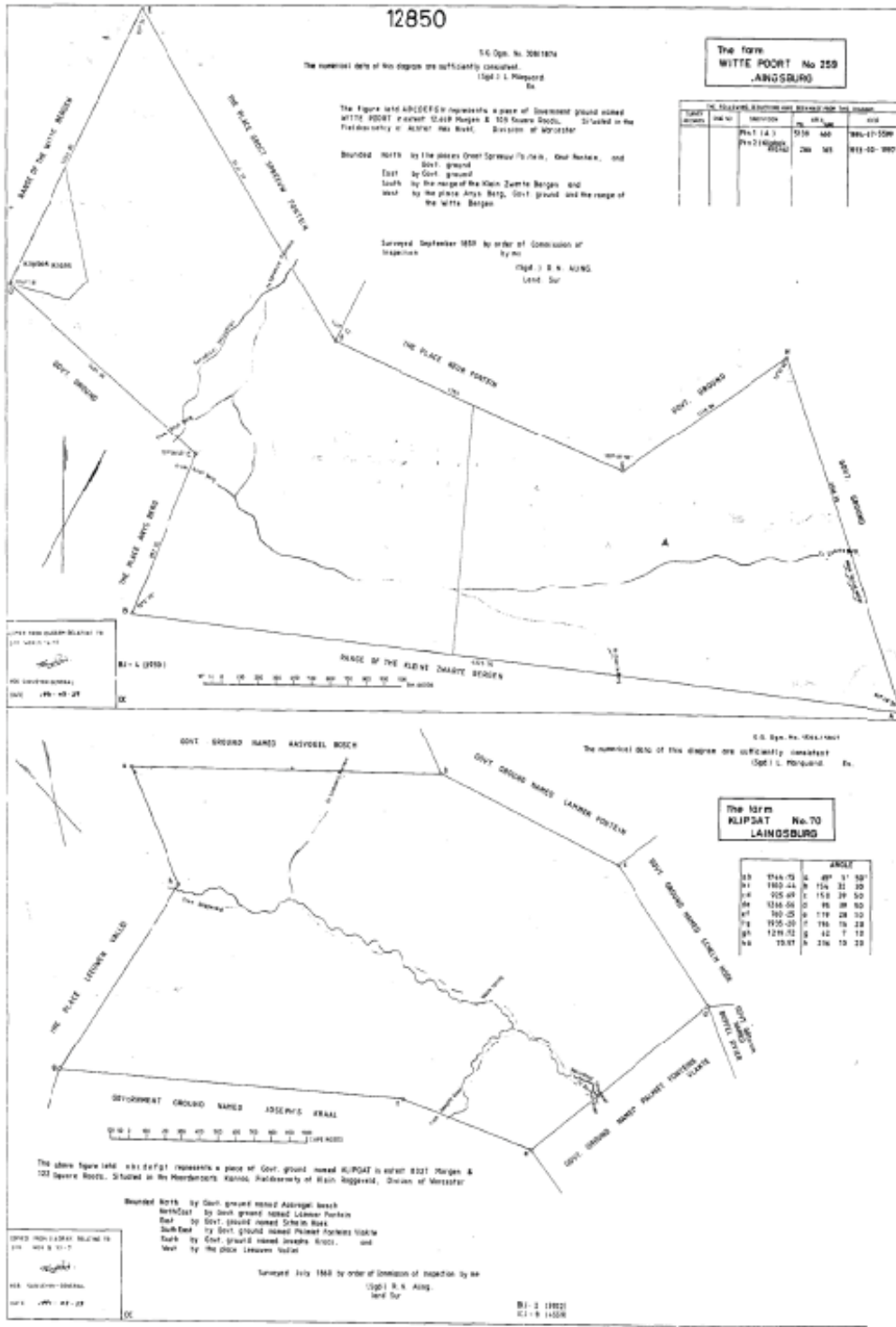
J.J. Nel

Sheet BJ - 4.

26.2.1951

17/1/1909

S B C
 S J.v.T.
 25 1/1

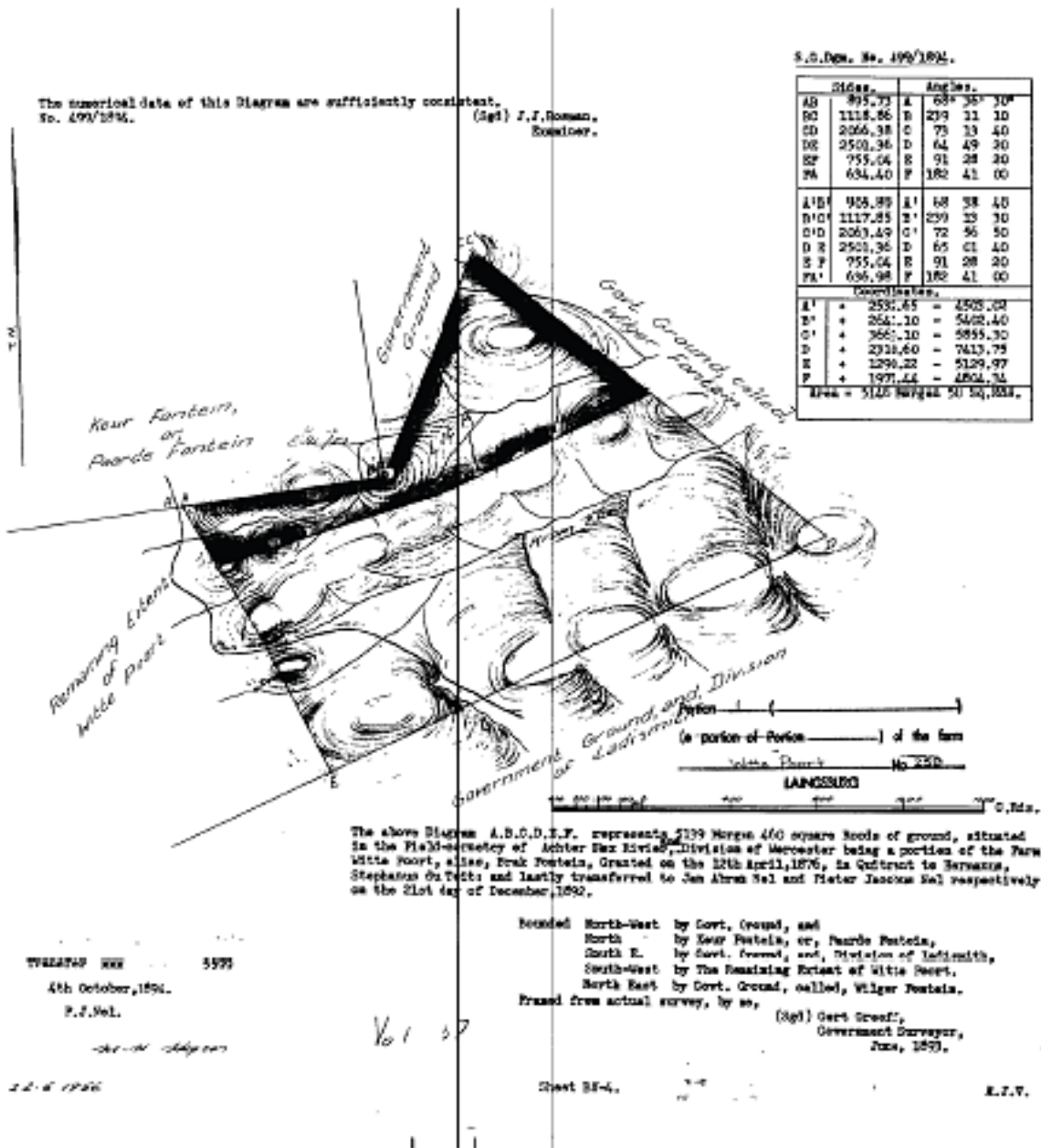


The numerical data of this Diagram are sufficiently consistent,
No. 499/1894.

(Sgt) J.J. Roman,
Surveyor.

S.O. Des. No. 499/1894.

Sides.		Angles.	
AB	895.73	A	68° 35' 30"
BC	1118.86	B	239 11 10
CD	2066.38	C	75 13 40
DE	2501.36	D	64 49 30
EF	755.04	E	91 28 20
FA	634.40	F	182 41 00
A'B'	905.89	A'	68 38 40
B'C'	1117.85	B'	239 13 30
C'D'	2063.49	C'	72 56 50
D'E'	2501.36	D'	65 01 40
E'F'	755.04	E'	91 28 20
F'A'	636.98	F'	182 41 00
Coordinates.			
A'	+ 2531.65	=	4505.00
B'	+ 2641.10	=	5402.40
C'	+ 2661.10	=	5895.30
D'	+ 2318.60	=	7413.75
E'	+ 1296.22	=	5129.97
F'	+ 1971.14	=	4804.34
Area = 5126 Hectars 50 Sq. Rds.			



TWENTY NINE 5575
4th October, 1894.
P.J.Nel.

22-8-1894

Vol 1 37

Bounded North-West by Govt. Ground, and
North by Kaar Fontein, or, Paarde Fontein,
South E. by Govt. Ground, and, Division of Indivisibly,
South-West by The Remaining Extent of Witte Poort,
North East by Govt. Ground, called, Witte Poort.
Frased from actual survey, by me,

(Sgt) Gert Greeff,
Government Surveyor,
June, 1893.

Sheet 25-4.

E.T.V.

THE FOLLOWING DEDUCTIONS HAVE BEEN MADE FROM THIS DIAGRAM.

Ptn. No.	Dwg. No.	Subdivision.	Area.		Deed.
			Morg.	Sq. Rds.	
Ptn. 1		Lot A	1081	400	1909-145-9046